

Emerging Markets Group

EMG Working Paper Series

WP-EMG-04-2007

“Liquidity and Expected Returns: Lessons from Emerging Markets”

Geert Bekaert, Campbell R. Harvey and Christian Lundblad

November 2006

Emerging Markets Group
Cass Business School
City University
106 Bunhill Row
London
EC1Y 8TZ
UK

www.cass.city.ac.uk/emg/

Liquidity and Expected Returns: Lessons from Emerging Markets

Geert Bekaert

Columbia University, New York, NY 10027 USA

National Bureau of Economic Research, Cambridge, MA 02138 USA

Campbell R. Harvey

Duke University, Durham, NC 27708 USA

National Bureau of Economic Research, Cambridge, MA 02138 USA

Christian Lundblad*

University of North Carolina, Chapel Hill, NC 27599 USA

November 2006

Abstract

Given the cross-sectional and temporal variation in their liquidity, emerging equity markets provide an ideal setting to examine the impact of liquidity on expected returns. Our main liquidity measure is a transformation of the proportion of zero daily firm returns, averaged over the month. We find that it significantly predicts future returns, whereas alternative measures such as turnover do not. Consistent with liquidity being a priced factor, unexpected liquidity shocks are positively correlated with contemporaneous return shocks and negatively correlated with shocks to the dividend yield. We consider a simple asset pricing model with liquidity and the market portfolio as risk factors and transaction costs that are proportional to liquidity. The model differentiates between integrated and segmented countries and time periods. Our results suggest that local market liquidity is an important driver of expected returns in emerging markets, and that the liberalization process has not fully eliminated its impact.

* We thank Dixon Lin and Sam Henkel for providing helpful research assistance. This paper has benefited from discussions with and comments from Laurie Hodrick, Chuck Trzcinka, Andrew Ellul, Costas Constantinou, Marco Pagano, Mark Seasholes, Darius Miller, Maureen O'Hara, and participants at the 2003 European Finance Association Meetings, 2004 American Finance Association Meetings, 2004 UCLA CIBER Doctoral Internationalization Consortium in Finance, and the 2005 Darden Emerging Market Finance Conference. We are especially grateful for the comments of two anonymous referees which greatly improved the article. Send correspondence to: Campbell R. Harvey, Fuqua School of Business, Duke University, Durham, NC 27708. Phone: +1 919.660.7768, E-mail: cam.harvey@duke.edu.

1 Introduction

It is generally acknowledged that liquidity is important for asset pricing. Illiquid assets and assets with high transaction costs trade at low prices relative to their expected cash flows, that is, average liquidity is priced, see, for example, Amihud and Mendelson (1986), Brennan and Subrahmanyam (1996), Datar, Naik and Radcliffe (1998), and Chordia, Subrahmanyam, and Anshuman (2001). Liquidity also predicts future returns and liquidity shocks are positively correlated with return shocks (see Jones (2002) and Amihud (2002)). Furthermore, if liquidity varies systematically (see Chordia, Roll, and Subrahmanyam (2000) and Huberman and Halka (2001)), securities with returns positively correlated with market liquidity should have high expected returns (see Pastor and Stambaugh (2003), Sadka (2006), Goyenko (2005), and Martinez, Nieto, Rubio and Tapia (2005) for recent empirical work). Acharya and Pedersen (2005) develop a model that leads to three different risk premia associated with changes in liquidity and find these risk premia to be highly significant in U.S. data.¹

The growing body of research on liquidity primarily focuses on the United States, arguably the most liquid market in the world. In contrast, our research focuses on markets where liquidity effects may be particularly strong, namely emerging markets. In a 1992 survey by Chuhan, poor liquidity was mentioned as one of the main reasons that prevented foreign institutional investors from investing in emerging markets. If the liquidity premium is an important feature of these data, the focus on emerging markets should yield particularly powerful tests and useful independent evidence.

In addition, many emerging markets underwent a structural break during our sample that likely affected liquidity, namely equity market liberalization.² These liberalizations give foreign investors the opportunity to invest in domestic equity securities and domestic investors

¹There is a vast theoretical literature on liquidity which starts with Kyle (1985), Glosten and Milgrom (1985), Easley and O'Hara (1987) and Admati and Pfleiderer (1988). Models linking liquidity to expected returns and other variates include Amihud and Mendelson (1986), Constantinides (1986), Grossman and Miller (1988), Heaton and Lucas (1996), Vayanos (1998), Lo, Mamaysky and Wang (2001), Holmstrom and Tirole (2002), Eisfeldt (2002), Huang (2003), and O'Hara (2003).

²Bekaert, Harvey, and Lumsdaine (2002) show that many macroeconomic and financial time-series show evidence of a break around such liberalizations.

the right to transact in foreign equity securities. This provides an additional verification of the importance of liquidity for expected returns, since, all else equal (including the price of liquidity risk), the importance of liquidity for expected returns should decline post liberalization. This is important, since when focusing on the U.S. alone, the finding of expected return variation due to liquidity can always be ascribed to an omitted variable correlated with a liquidity proxy. After all, there are a priori reasons to suspect relatively small liquidity effects in the U.S. The U.S. market is vast in the number of traded securities and it has a very diversified ownership structure, combining long-horizon investors (less subject to liquidity risk) with short-term investors. Hence, we may observe clientele effects in portfolio choice that mitigate the pricing of liquidity. Such diversity in securities and ownership is lacking in emerging markets, potentially strengthening liquidity effects. Moreover, as an important side-benefit, we can test whether improved liquidity contributes to the decline in the cost of capital post-liberalization that is documented by, for example, Bekaert and Harvey (2000).

There are some serious obstacles to our analysis. First, the data in emerging markets are of relatively poor quality, and detailed transaction data (bid-ask spreads or market impact estimates, for example) are not widely available. For example, Domowitz, Glen, and Madhavan (2001) explore trading costs and liquidity in an international context for many countries, but they are forced to focus on trade level data, provided by Elkins/McSherry Inc., over a two year period. Similarly, Jain (2002) explores the relation between equity market trading design and liquidity across various countries, but uses a hand collected time-series of bid-ask spreads spanning only several months. Second, from the perspective of traditional asset pricing empirics, we have relatively short time-series samples making pure time-series country-by-country tests less useful, especially given the volatility of emerging market returns.

To overcome the first problem, we use liquidity measures that rely on the incidence of observed zero daily returns in these markets. Lesmond, Ogden and Trzcinka (1999) argue that if the value of an information signal is insufficient to outweigh the costs associated with transacting, then market participants will elect not to trade, resulting in an observed zero return. The advantage of this measure is that it requires only a *time-series* of daily equity returns. Given the paucity of time-series data on preferred measures such as bid-

ask spreads or bona-fide order flow (following Kyle (1985)), this measure is an attractive empirical alternative. To overcome the second problem, we impose cross-country restrictions on the parameter space when examining the dynamics of expected returns and liquidity.

Our analysis is organized into three sections. The second section of the paper introduces and analyzes our two measures of (il)liquidity. The first measure is simply the proportion of zero daily returns. We demonstrate that this measure is highly correlated with more traditional measures of transaction costs for emerging equity markets for the limited periods when overlapping data are available. Lesmond (2005) provides a detailed analysis of emerging equity market trading costs, and confirms the usefulness of this measure. For the period from the mid-1990s over which TAQ data are available, Goyenko, Holden, Lundblad, and Trzcinka (2005) compare various transaction cost measures for U.S. data, and find that those based on observed zero returns are correlated with effective costs obtained from high-frequency data. In a longer historical context, we also provide a case study of how the measure compares to more standard liquidity measures using U.S. data. Our second measure incorporates information about the length of the non-trading (or zero return) interval.

Section 3 characterizes the dynamics of returns and liquidity using various vector autoregressions (VARs). We devote special attention to the hypotheses developed and tested in Amihud (2002) for U.S. data: if liquidity risk is priced and persistent, liquidity should predict future returns and unexpected liquidity shocks should co-move contemporaneously with unexpected returns. We also contrast global and local components of return predictability (see Bekaert (1995) and Harvey (1995) for earlier work).

Section 4 outlines a simple pricing model that we use to interpret the liquidity effects on expected returns. The model accounts for both liquidity effects through transaction costs and for potential covariation of returns with systematic liquidity, and embeds the model in Acharya and Pedersen (2005) as a special case. We show that in such a model, local liquidity variables may affect expected returns even under full international market integration. We provide an exploratory empirical analysis using country portfolios and the VAR estimates to describe the dynamics of expected returns.

The concluding section summarizes our results and draws lessons for future research.

2 Liquidity Measures for Emerging Markets

2.1 *Data and summary statistics*

Our empirical evidence focuses on 19 emerging equity markets. Table 1 reports summary statistics for all data. From Standard and Poor’s Emerging Markets Database (EMDB), we collect monthly returns (U.S. dollar), in excess of the one-month U.S. Treasury bill return, and dividend yields for the S&P/IFC Global Equity Market Indices.³

Before introducing our preferred measures of liquidity, we construct a measure of equity market turnover (TO) from the same data set: the equity value traded for each month, divided by that month’s equity market capitalization. Amihud and Mendelson (1986) show that turnover is negatively related to illiquidity costs. Zimbabwe exhibits the lowest level of average equity market turnover at 0.9% per month, whereas Taiwan exhibits the highest level at 20.9% per month.

Given the paucity of realized transaction cost data for emerging equity markets, our main liquidity measure exploits the effect transactions costs may have on daily returns. Following Lesmond, Ogden and Trzcinka (1999) and Lesmond (2005), we construct the proportion of zero daily returns (ZR) observed over the relevant month for each equity market. We obtain daily returns data in local currency at the firm level from the Datastream research files starting from the late 1980’s. For each country, we observe daily returns (using closing prices) for a large collection of firms. The total number of firms available from the Datastream research files accounts for about 90%, on average, of the number of domestically listed firms reported by the World Bank’s World Development Indicators. We also present the average number of firms across the sample and the total used at the end of the sample. The difference between the two reflects both increased Datastream coverage and actual equity issuance in these countries. For each country, we calculate the capitalization-weighted proportion of zero daily returns across all firms, and average this proportion over the month.⁴

³As a robustness check, we also measure returns in local currency, and the results (not reported) are broadly similar.

⁴We also construct equally-weighted liquidity measures for each country. Moreover, we computed the zero measure using the Standard and Poor’s EMDB daily data over the period from 1996-2003 for which they are available. We find these alternative zero measures to be highly correlated with ours. The correlation with

As can be seen, zeros are fairly persistent. Some of these equity markets exhibit a very large number of zero daily returns; Colombia, for example, has a 52% incidence of zero daily returns across domestically listed firms, and the smallest incidence of zero daily returns is 6.6%, on average, in Taiwan. Given data limitations associated with the firm-level daily returns, we focus on a sample that covers January 1993 to December 2003.

Lengthy periods of consecutive non-trading days should be associated with greater illiquidity effects than non consecutive periods. Imagine a situation in which a stock trades every other day versus a stock that does not trade for the first 15 days of the month and then trades every day until the end of the month. For both stocks, the zero measures indicate a value of 0.5 for the month. However, the potential price pressure of any trade following a lengthy non-trading interval in the second case appears to present a much worse instance of illiquidity. Our alternative measure of liquidity attempts to take this return “catch-up” effect into account.⁵

Using N stocks in country i , each indexed by j , we create a daily “price pressure” measure as follows:

$$PP_{i,t} = \frac{\sum_{j=1}^N w_j \delta_{j,t} |r_{j,t,\tau}|}{\sum_{j=1}^N w_j |r_{j,t,\tau}|}, \quad (1)$$

where w_j represents the weighting of the stocks in the index. We use a capitalization-weighted measure, but we also compute an equally-weighted price pressure measure as a robustness check. The variable, $\delta_{j,t}$, indicates no trade days (as proxied by zero return days) and the first day after a no trade interval when the price pressure is felt:

$$\delta_{j,t} = \begin{cases} 1, & \text{if } r_{j,t} \text{ or } r_{j,t-1} = 0 \\ 0, & \text{otherwise.} \end{cases} \quad (2)$$

Also,

$$r_{j,t,\tau} = \begin{cases} r_{j,t}, & \text{if } r_{j,t-1} \neq 0 \\ \prod_{k=0}^{\tau-1} (1 + r_{i,t-k}) - 1, & \text{if } r_{j,t-1} = 0. \end{cases} \quad (3)$$

Here τ represents the number of days the stock has not been trading and $r_{j,t,\tau}$ is an estimate of the return that would have occurred if the stock had traded. Because market-wide factors

the equally-weighted measure is reported in Table 2.

⁵We are grateful to Marco Pagano for comments that inspired the development of this measure. Ideally, we would also compute a true price impact measure using volume data, as proposed by Amihud (2002). Unfortunately, the quality and availability of volume data for emerging markets is so poor that this exercise proved futile.

may dominate return behavior more than idiosyncratic factors in emerging markets, we use the value-weighted market return, $r_{i,t}$, as our proxy for the unobserved return. Note that when a stock does not trade for a lengthy interval, $r_{j,t,\tau}$ may become quite large and $PP_{i,t}$ may be drawn toward 1.0.

Our (il)liquidity measure is then $PP_{i,t}$ averaged across all days in a particular month for each country. If no stocks trade at all, the measure is defined to be 1. Table 1 illustrates that the salient features of the data are very similar for the $PP_{i,t}$ measure and the proportion of zero returns. The least liquid country is now Indonesia instead of Colombia. The first column of Table 2 shows that the two measures are generally highly correlated, with time series correlations reaching as high as 95% for Venezuela. The average time-series correlation is 54%, but cross-sectionally the average zero and price pressure measures show 94% correlation. From these two measures, we create two liquidity proxies, $\ln(1 - ZR)$ and $\ln(1 - PP)$.

2.2 *Do zeros measure illiquidity?*

Liquidity and transactions costs are notoriously difficult to measure [see Stoll (2000), O'Hara (2003), and Hodrick and Moulton (2005) for discussions]. The availability of detailed microstructure data in the U.S. market allows for the construction of sharper measures of liquidity. For example, Chordia, Roll and Subrahmanyam (2000, 2001, 2004) calculate daily measures of absolute and proportional bid-ask spreads, quoted share, and dollar depth. Unfortunately, such data are not generally available for emerging markets.

Amihud (2002) examines the average ratio of the daily absolute return to the dollar trading volume on that day. This absolute (percentage) price change per dollar of daily volume is interpreted as the daily price impact of order flow. Pastor and Stambaugh (2003) use a complex regression procedure involving daily firm returns and signed dollar volume to measure (innovations in) price reversals, both at the firm and market levels. Price reversals are viewed as reflecting illiquidity. While these two measures are straightforward to apply, we do not have dollar volume data on a daily basis in emerging markets. Moreover, volume data are very challenging, and are plagued by trends and outliers – problems that are likely exacerbated in our emerging market data. Finally, both measures require positive volume during the sampling interval, which might be problematic for some emerging markets where

non-trading problems are particularly acute.

Nevertheless, it is important to be aware of the limitations of our zeros and price pressure measures. First, information-less trades (such as a trade by an index fund) should not give rise to price changes in liquid markets. The fact that we do not actually measure non-trading but only a zero return is consequently a potentially serious limitation. The market reaction to such a trade may also depend on the particular trading mechanism in place. Whereas trading mechanisms vary substantially across emerging markets, we do not think that noise trades dominate the behavior of our measure. The fact that the zero measure correlates negatively with turnover is indirect evidence supportive of this view. The cross-sectional correlation between the *average* levels of turnover and the *average* incidence of zero daily returns (presented in Table 2) across our sample countries is -0.35 , indicating that the zeros measure is potentially reflecting relative *levels* of liquidity across the equity markets in our study. Table 2 presents correlations of our two liquidity measures *across time* within each country. On average, the correlation between the proportion of zero daily returns and equity market turnover within a country is -0.16 . If positive volume zero returns do occur, we can still interpret zeros as a measure of the lack of informed trading (see Lesmond, Ogden and Trzcinka (1999) for further discussion).

Second, another concern is that there is a zero return (no trading) because of a lack of news. Empirically, shocks or news generate persistent volatility patterns. In addition, higher volatility is likely associated with a higher compensation for providing liquidity, see for instance, Vayanos (2004). However, Table 2 indicates that there is no consistent pattern in the correlation between estimates of conditional volatility and the liquidity measure.⁶ The correlation is as often positive as it is negative, though economically small in most cases. On average, the correlation is effectively zero. Perhaps this is not so surprising, as alternative theories (see for example Pagano (1989)) predict a positive relation between volatility and market thinness or illiquidity.

⁶We obtain estimates of the conditional volatility by maximum likelihood for both symmetric GARCH(1,1) and asymmetric threshold GARCH(1,1) models [Glosten, Jagannathan, and Runkle (1993) and Zakoian (1994)] of the measured monthly equity returns for each market. Table 2 only displays correlations for the threshold GARCH case.

As an alternative, we also construct a measure of within-month volatility similar to French, Schwert, and Stambaugh (1987). First, we sum the squared returns *at the firm level* within the month, and then value-weight this sum across firms for that month. Table 2 presents correlations between the incidence of zeros and the within-month volatility across time for each country. On average, the average correlations between the proportion of zero daily returns and the price pressure measures with within-month volatility are -0.02 and -0.05 , still suggesting that the two liquidity measures are capturing unique aspects of liquidity not entirely driven by the presence or absence of news in a particular period.

Third, it is possible that our zeros measure artificially reflect other characteristics of the stock market. For example, markets with many small stocks may automatically show a higher level of non-trading compared to markets with larger stocks. The focus on a value-weighted measure mitigates this concern. Moreover, there is a strong negative cross-sectional correlation between the number of companies used in the computation and both the equal or value-weighted proportion of daily zero returns. The cross-sectional correlation between the number of firms covered by Datastream and the value-weighted zeros measure is -0.64 (see Table 1).

Perhaps the most compelling diagnostic is to explore the relation between the returns-based measure of transaction costs and more conventional measures. To this end, Table 2 also presents correlations with available bid-ask spreads. Bid-ask spread data for domestic firms are obtained from the mid to late 1990's for a few countries from the Datastream research files. We find that the proportion of daily zero returns measure is highly correlated, 48% on average, with the mean bid-ask spread across all countries and time-periods for which bid-ask spreads are available. Datastream supplied bid-ask spread data availability are limited; however, Lesmond (2005) also documents that the proportion of zero daily returns is highly correlated with hand-collected bid-ask spreads for a broader collection of emerging equity markets. The correlation between equity market turnover and the bid-ask spread is only -0.20 , on average, but there are some countries (Korea, Malaysia, and Mexico) for which the negative correlation is more pronounced. Taken together, this suggests that the proportion of zero daily returns appears to be picking up a component of liquidity and transaction costs that turnover does not.

Finally, recent research by Lowengrub and Melvin (2002), Karolyi (2006), and Levine and Schmukler (2006) suggests that the trading activity of cross-listed securities may migrate to foreign markets. Firms trading across markets will have price series reported in Datastream in each of the markets in which the asset trades. Because we obtain local market prices, our liquidity measure does not reflect activity in the foreign listed market. If a cross-listed stock trades abroad but not locally, our zeros measure is biased upward. As a robustness check, we recalculate the zeros and price pressure measures excluding any firms that are also listed in the U.S. by means of an ADR according to Datastream. The resulting measures are very highly correlated with our original measures, with the correlation exceeding 0.95 in almost every case.

2.3 *A case study using U.S. Data*

For the United States, we explore the relationship between our first measure, the proportion of zero daily returns, and three other measures of transaction costs/liquidity common in the literature. Hasbrouck (2004, 2005) constructs a Bayesian estimate of effective trading costs from daily data using a Gibbs-sampler version of the Roll (1984) model.⁷ This method yields a posterior distribution for the Roll-implied trading costs from the first-order autocorrelation in returns. For U.S. equity data, Hasbrouck (2005) shows that the correlations between the Gibbs estimate and estimates of trading costs based upon high frequency Trade and Quote (TAQ) data are typically above 0.90 for individual securities in overlapping samples. Hasbrouck (2005) argues that Hasbrouck's (2004) effective cost and Amihud's (2002) price impact measures are, among standard transaction costs estimates based on daily data, most closely correlated with their high-frequency counterparts from TAQ data.

Figure 1a compares the effective cost and price impact measures for the aggregate NYSE and AMEX markets with the incidence of zero daily returns in these markets at the annual frequency from 1962-2001. The correlations between the proportion of zero daily returns and Hasbrouck's effective costs and Amihud's price impact are 0.42 and 0.40, respectively. While the major cycles nicely coincide during most of the sample, there is some divergence in the

⁷Also see Harris (1990) for an analysis of the Roll estimator, and Ghysels and Cherkoai (2003) for an application to an emerging market.

last 5-years. There are a sharp declines in the incidence of zero returns which coincides with the NYSE's move to 1/16th in 1997 and decimalization in 2000, but which are absent from the effective costs and price impact measures. For comparison, we also plot the equally-weighted proportional bid-ask spreads on DJIA stocks from Jones (2001) in Fig. 1a. Interestingly, unlike the other measures of transaction costs, the proportional spread data do exhibit the sharp declines in the late 1990's in accordance with the reduced incidence of zero daily returns. The overall correlation between bid-ask spreads and the proportion of zeros is 0.30. Taken together, this evidence suggests that the proportion of zero daily returns for the United States is, at the very least, associated with time-series variation in other measures of transaction costs used in this literature.

Our use of zeros in emerging markets is predicated on the assumption that zero returns proxy for no volume zero returns in these relatively illiquid markets. For the U.S., we can actually construct a no-volume zeros measure. Figure 1b compares the same measures with zero returns observed on pure zero volume days. In this case, the correlation between the proportion of zero daily returns on zero volume days and Hasbrouck's effective costs and Amihud's price impact are much higher at 0.81 and 0.91, respectively. This distinction may be important as zero returns in emerging markets are more likely associated with non-trading than in the U.S. where a significant number of trades are processed with no associated price movement.

We also compare the incidence of zero returns with the reversal measure suggested by Pastor and Stambaugh (2003) (PS). For the PS measure, we consider two alternative constructions. The first conducts firm-level regressions on daily data over each month, averages the reversal coefficients across all firms, and then averages within the year. The second method conducts the firm-level regression on daily data over each year, and averages the reversal coefficient across all firms. Interestingly, these two measures show little correlation with one another and only the first method leads to correlations with Hasbrouck's (2005) effective costs, the Amihud (2002) price impact measure, and measured bid-ask spreads that have the expected sign. The Pastor-Stambaugh measure, which measures liquidity, is positively correlated with the proportion of zero daily returns for both methods. Consequently,

our measure does not capture aspects of liquidity reflected in the reversal measure.⁸

3 Liquidity and Expected Asset Returns: A VAR Analysis

If excess returns reflect compensation for expected market illiquidity and illiquidity is persistent, measures of liquidity should predict returns with a negative sign. Moreover, unexpected market liquidity should be contemporaneously positively correlated with stock returns because a shock to liquidity raises expected liquidity, which in turn lowers expected returns, and hence raises prices. Amihud (2002) formulates these hypotheses and finds support for them in U.S. data. In this section, we estimate simple VAR systems that allow us to test these hypotheses for emerging markets. The benchmark specification distinguishes between local and global liquidity, and examines the effect of equity market openness on the return-liquidity relation. In subsequent specifications, we consider a number of other country characteristics and investigate potential contagion effects.

In the next section, we propose a formal pricing model that differentiates between two main channels through which liquidity can affect expected returns, the transaction cost channel and liquidity as a systematic risk factor channel. The resulting model for expected returns nests the model Acharya and Pedersen (2005) obtain using a simple overlapping generation's economy with time-varying liquidation costs. Acharya and Pedersen show that under mild conditions the Amihud pricing hypotheses are maintained in this model. We will use the expected returns identified by the VARs in this section to test the pricing implications of the model.

3.1 VAR benchmark specification

For our benchmark specification, we define the liquidity measure $L_{i,t} = \ln(1 - ZR_{i,t})$, with $ZR_{i,t}$ the value-weighted zero return measure for country i in month t . Also, define $r_{i,t}$, the value-weighted excess return on country index i (measured in dollars). We assume that

⁸We thank Lubos Pastor for making the average of the monthly PS measure available, Charles Jones for the bid-ask spread data and Joel Hasbrouck for providing both the Amihud price impact, the Hasbrouck Gibbs sampled, and the annual PS measures (the second PS measure).

returns, the liquidity measure, and potentially other instruments follow a (restricted) vector autoregressive system. For the benchmark specification, the VAR variables, $x_{i,t}$, consist of $[r_{i,t}, L_{i,t}]$. Below, we consider various alternative specifications. For country i , the base VAR(1) model is as follows:

$$\begin{aligned} \mathbf{x}_{i,t} = & \mu_{i,t-1} + (\mathbf{A}_0 + Lib_{i,t-1}\mathbf{A}_1)(\mathbf{x}_{i,t-1} - \mu_{i,t-1}) \\ & + (\mathbf{B}_0 + Lib_{i,t-1}\mathbf{B}_1)(\mathbf{x}_{w,t-1} - \mu_{w,t-1}) + \Sigma_{i,t-1}^{1/2}\epsilon_{i,t}. \end{aligned} \quad (4)$$

The first special feature of the VAR is the presence of the interaction variable $Lib_{i,t}$. We define $Lib_{i,t}$ as the proportion of local market capitalization not subject to foreign ownership restrictions, which was proposed as a time-varying measure of market integration by Bekaert (1995), Edison and Warnock (2003) and De Roon and De Jong (2005). Equity market liberalization takes place when a country first provides foreign investors access to the domestic equity market. $Lib_{i,t}$ is a continuous measure of equity market “openness” designed to reflect the gradual nature of the increasing foreign “investability” of these markets. The measure is the ratio of the market capitalization of the constituent firms comprising the S&P-IFC Investable Index to that of firms comprising the S&P-IFC Global Index for each country. The Global Index, subject to some exclusion restrictions, is designed to represent the overall market portfolio for each country, whereas the Investable index represents a portfolio of domestic equities that are available to foreign investors. The investability measure varies between 0 (closed market) and 1 (fully open market). If capital market regulations truly affect the degree of capital market integration, $Lib_{i,t}$ allows us to make the VAR dynamics dependent on the state of market integration in a particularly parsimonious manner.

The constant term is modeled as $\mu_{i,t} = (\alpha_{0,i} + \alpha_1 * Lib_{i,t})$ and $\alpha_{0,i}$ denotes a country-specific fixed effect for each variable; α_1 denotes a vector of cross-sectionally restricted liberalization coefficients for each variable. Essentially, we assume that country specific factors may lead to unmodeled differences in expected returns and liquidity (for example, due to the effects of differing market structures), but capture the change upon liberalization with the function $\alpha_1 Lib_{i,t}$. Analogously, the VAR conditional variance-covariance matrix for country i is $\Sigma_{i,t}$, where the Cholesky decomposition of the variance-covariance matrix, $\Sigma_{i,t}^{\frac{1}{2}}$, is $\Sigma_0 + Lib_{i,t}\Sigma_1$. Both Σ_0 and Σ_1 are lower triangular matrices and are restricted to be identical across

countries and time. We estimate the Cholesky decomposition to ensure that the variance-covariance matrix is always positive semi-definite. Finally, given the small time-series nature of our data sample, \mathbf{A}_0 , \mathbf{A}_1 , \mathbf{B}_0 , and \mathbf{B}_1 , the predictability matrices, are also restricted to be identical across countries. Note that we allow both local and global variables to affect expected returns and expected liquidity, and that, logically, we expect this dependence to vary with the degree to which the local market is integrated in global capital markets. Within this framework, the Amihud hypotheses are easily tested. Under closed equity market, this implies that the (1,2) element in \mathbf{A}_0 is negative and the (2,1) element in $\mathbf{\Sigma}_0$ is positive. Our framework then permits tracing the effect of open equity markets on the pricing of liquidity.

Additionally, we specify the VAR dynamics for the U.S. market (as a proxy for global factors):

$$\mathbf{x}_{w,t} = \mu_w + \mathbf{A}_w(\mathbf{x}_{w,t-1} - \mu_w) + \mathbf{\Sigma}_w^{1/2} \epsilon_{w,t}. \quad (5)$$

We collect the relevant VAR innovations, $\epsilon_{i,t}$, from (4) and (5) for each country as follows:

$$\epsilon_t = \begin{bmatrix} \epsilon_{w,t} \\ \epsilon_{1,t} \\ \vdots \\ \epsilon_{N,t} \end{bmatrix}, \quad (6)$$

where N denotes the number of countries in our sample. Let $\mathbf{\Omega}_t$ denote the conditional variance-covariance matrix for the entire cross-section as follows:

$$\mathbf{\Omega}_t = \begin{bmatrix} \mathbf{\Sigma}_w & \beta_{1,t} \cdot \text{diag}(\mathbf{\Sigma}_w) & \cdots & \beta_{N,t} \cdot \text{diag}(\mathbf{\Sigma}_w) \\ \beta_{1,t} \cdot \text{diag}(\mathbf{\Sigma}_w) & \mathbf{\Sigma}_{1,t} & \cdots & \beta_{1,t} \cdot \text{diag}(\mathbf{\Sigma}_w) \cdot \beta'_{N,t} \\ \vdots & & & \\ \beta_{N,t} \cdot \text{diag}(\mathbf{\Sigma}_w) & \beta_{N,t} \cdot \text{diag}(\mathbf{\Sigma}_w) \cdot \beta'_{1,t} & \cdots & \mathbf{\Sigma}_{N,t} \end{bmatrix}. \quad (7)$$

Here, $\text{diag}(\cdot)$ takes the U.S. variance-covariance matrix, but zeros out the off-diagonal elements. Accordingly, $\beta_{i,t} = \beta_0 + \text{Lib}_{i,t} \beta_1$ represents a matrix of betas – covariances of the country specific shocks with the U.S. shocks divided by the variances of the U.S. shocks. The matrices, β_0 and β_1 , are full matrices assumed identical across countries, while the overall betas do vary with the liberalization regime. The rationale for this covariance matrix is a factor structure where global factors affect both the mean and the conditional variance of

the emerging market variable dynamics. If two emerging markets are both exposed to global factors they must also show cross-correlations, but we restrict these covariances to come from the factor structure. From a panel data perspective, this means that we accommodate complete within-country and across-country SUR effects with parameter restrictions.

3.2 Estimation

The parameters to be estimated are the country-specific fixed effects, $\alpha_{0,i}$; the liberalization effect, α_1 ; the cross-sectionally restricted matrices \mathbf{A}_0 , \mathbf{A}_1 , \mathbf{B}_0 , and \mathbf{B}_1 ; the components of the Cholesky decomposition of the VAR innovation variance-covariance matrix, $\mathbf{\Sigma}_0$ and $\mathbf{\Sigma}_1$; the parameters of the U.S. market process; and the beta matrices. The log likelihood function for the full panel can be expressed as follows:

$$L = \sum_{t=1}^T l_t = -\frac{k \cdot (N + 1)}{2} \ln(2\pi) - \sum_{t=1}^T \left(\frac{1}{2} \ln |\mathbf{\Omega}_{t-1}| + \frac{1}{2} \epsilon_t' \mathbf{\Omega}_{t-1}^{-1} \epsilon_t \right) \quad (8)$$

where k is the number of endogenous variables, and $k \cdot (N + 1)$ is the number of individual equations. For a base specification of 2 variables, this involves 39 parameters (excluding country fixed effects). We estimate the parameters describing the VAR process using a quasi-maximum likelihood (QMLE) methodology, reporting robust standard errors as in Bollerslev and Wooldridge (1992).

There is a large literature on statistical inference problems with respect to establishing return predictability (see Stambaugh (1999) and Hodrick (1992)). The results in that literature are not directly applicable to our framework because we have a panel set-up. Nevertheless, the amount of time series information is limited and we must recognize that the asymptotic distribution of t -tests may poorly approximate the true finite sample distribution. We therefore conduct a Monte Carlo experiment to examine the small sample properties of the pooled time-series cross-sectional VAR estimator. We focus on the bivariate VAR, including returns and liquidity.

We simulate series $\tilde{\mathbf{x}}_{i,t} = [r_{i,t}, Lib_{i,t}]$ according to the base VAR(1) model described in equations (4) and (5) with the errors drawn from the standard normal distribution. For $Lib_{i,t}$, we use the observed liberalization indicators, and we constrain the first row of \mathbf{A}_0 , \mathbf{A}_1 , \mathbf{B}_0 , \mathbf{B}_1 , and \mathbf{A}_w to be a row of zeros, so that under the null, lagged endogenous variables

do not predict returns for emerging markets or the U.S. The innovation covariance matrix is as in (7) with the correlations across emerging markets zeroed out. However, the innovations of all variables are allowed to be correlated within countries as in the observed data. The panel effects across emerging markets greatly complicate the estimation of the model and turn out to be of second-order importance. Therefore, the Monte Carlo focus on a system where the cross-country correlation among emerging markets is set to zero. For each replication (with the identical number of time-series observations as we have in the observed data), we estimate the unconstrained VAR(1) for returns and liquidity using the pooled MLE methodology presented in (8). We also consider a simulation under the alternative of return predictability, where the simulated data are drawn in exact accordance with our parameter estimates obtained below.

The appendix table presents some relevant percentiles of the empirical distribution for the coefficient describing the predictive nature of liquidity for future returns. Under the null of no predictability, the mean coefficient is -0.0009, and the t -statistic is -0.05, so that there is essentially no estimation bias for the observed liquidity effect. The distribution of the t -statistic is similarly quasi unbiased, meaning that for a two-sided test at the 5% level, the critical value is -2.03. Our tests also have satisfactory power for a test of the null hypothesis of liquidity not predicting future returns. Given these results, we will use asymptotic p-values for the remainder of the article, as we have generally verified that our results are robust to finite sample inference.

3.3 *Specification tests*

In Table 3, we present some simple specification tests on the residuals from the bivariate VAR. We report the first-order autocorrelation coefficient for each country's residuals. We also present asymptotic p-values, country by country, for a Wald test that the first three autocorrelations are jointly zero. The first-order autocorrelation coefficient of the return residuals is above 0.2 for only one country (Colombia) and, using the asymptotic test and Monte Carlo based critical values, we only reject the null of no serial correlation for three countries (at the 5% level). The model is less successful with respect to liquidity. There are six countries with residual autocorrelation coefficients over 0.2 in absolute value, with the

autocorrelation coefficient close to 0.4 for India. Both the asymptotic and Monte Carlo based tests reject the null of no autocorrelation for 9 countries at the 5% level. We also conduct a joint Wald test where the null hypothesis is that all of the first three autocorrelations across countries are jointly zero (with $18 \times 3 = 54$ restrictions); the test is not rejected for the return residuals, but is strongly rejected for the liquidity residuals. The specification tests results are robust to the inclusion of additional instruments, such as market turnover or the dividend yield.

Using the standard Jarque-Bera normality test, we not surprisingly reject the normality of both the return and liquidity residuals for the majority of the countries. This reconfirms the usefulness of standard errors robust to the mis-specification of the error distribution.

3.4 *Empirical results*

3.4.1 **Bivariate VAR, benchmark**

In Table 4, we present estimation results for the bivariate VAR(1), which includes excess returns and market liquidity, as specified in equations (4)-(7). First, we display the VAR dynamics in the form of the own-country effects, A_0 and A_1 , as well as the predictability effects associated with lagged U.S. variables, B_0 and B_1 , where the A_1 and B_1 matrices measure the liberalization effects.

We start the discussion by investigating the predictive power of local variables for returns. Excess returns display positive autocorrelation, on average across the countries, consistent with Harvey (1995); however, the coefficient is not statistically significant. Return autocorrelation does not seem to be much affected by the financial openness regime. The return coefficient on lagged local liquidity (in closed markets) is statistically significant, -0.1321 (with a standard error of 0.030); however, the coefficient becomes much less negative in financially open markets, and the change is significant. Hence, we confirm Amihud's (2002) results for closed markets, but not for open markets.

An interesting possibility is that liquidity spuriously predicts returns because it is a non-trading measure. When there is significant non-trading, information only slowly gets impounded in prices which may lead to positively autocorrelated returns. In periods of very

high illiquidity (low liquidity), news will take longer to affect returns, and this might be what the regression picks up. If this is the main mechanism driving our negative return-liquidity coefficients, the true autocorrelation coefficient should be higher than the 0.0548 feedback coefficient we measure here, as we now partially control for non-trading. To investigate this, we also run the VAR with the liquidity variable zeroed out, but we find the average autocorrelation coefficient to be lower (0.048) – not higher. As a result, it seems unlikely that non-trading is the main reason we observe return predictability.

We also present several Wald tests on return predictability, split up over local versus global instruments. For the tests with local factors, the null hypothesis is that the first row of \mathbf{A}_0 is 0 for closed countries and the first row of $\mathbf{A}_0 + \mathbf{A}_1$ is 0 for open countries. For closed countries, the test rejects the null of no predictability with a p-value of 0.00; however for open countries, the test fails to reject (p-value of 0.37). For the tests on return predictability using global factors, the null hypothesis is that the first row of \mathbf{B}_0 is 0 for closed countries and the first row of $\mathbf{B}_0 + \mathbf{B}_1$ is 0 for open countries. Surprisingly, the test rejects for closed countries, but not for open countries. We also investigate the effects of financial liberalization on return predictability testing the null hypotheses that the first rows of \mathbf{A}_1 and \mathbf{B}_1 are 0. Both hypotheses are rejected at the 5% level.

Turning to the liquidity equations, we see that the liquidity variable displays significant autocorrelation, with an estimated coefficient on lagged liquidity of 0.64, with the coefficient increasing to 0.88 for financially open countries. Lagged returns positively affect future liquidity with the coefficient becoming larger for open countries. Griffin, Nardari and Stulz (2004) examine the relation between past returns and future trading activity in 45 countries, measured by turnover, and find a positive and significant effect. Interestingly, a detailed analysis of their results reveals that the effect is less pronounced for some more developed markets and nonexistent for the U.S. (at least over the full sample). We also find that the effect is not significant for the U.S. Griffin et al. speculate that a costly stock market participation story is behind the results, but it would appear difficult to explain our findings with such a story.

Next, we examine how U.S. returns and liquidity affect local variables, the B matrices. A 1% increase in U.S. market returns predicts a 22 basis point increase in local returns

in closed markets; however, the coefficient is not significant. Such a cross-serial correlation would be consistent with a market where securities trade infrequently and world or U.S. news is slowly affecting prices. If liquidity improves upon liberalization, the effect may diminish; however, the importance of global factors should also increase upon liberalization. We find that the coefficient slightly decreases upon liberalization, but the change in coefficients is insignificant. U.S. market returns do affect liquidity positively, but the effect is dramatically reduced upon liberalization. Global liquidity also affects local returns negatively and the effect is significant, but disappears all-together for liberalized countries. This result is not robust across specifications with different return or liquidity measures.

It is also of interest to investigate how liberalization affects the unconditional means of returns and liquidity. The critical parameters are the coefficients on $Lib_{i,t-1}$, α_1 , reported in Table 4. If liberalizations reduce the cost of capital, we would expect a negative coefficient in the return equation, but we find a positive and significant coefficient. Bekaert and Harvey (2000) discuss extensively the difficulty in interpreting liberalization effects based on return measures in emerging markets. In the liquidity equation, liberalizations significantly improve liquidity, as we would expect.

We also present evidence on the U.S. market VAR dynamics. U.S. market returns do not display economically or statistically significant autocorrelation. Further, while the return predictability coefficient on lagged liquidity is large and negative, it is not statistically significantly different from zero. Finally, U.S. market liquidity is very persistent, with an autocorrelation coefficient near 1; this reflects the sharp declines in illiquidity (and bid-ask spreads) over the last 15 years. When a longer sample is used going back to 1962, the autocorrelation drops considerably. A Wald test of the null hypothesis that the U.S. dynamics are equivalent to the VAR dynamics of a fully integrated emerging market, $\mathbf{A}_w^{i,j} = \mathbf{A}_0^{i,j} + \mathbf{A}_1^{i,j}$, for every (i, j) is rejected with a p-value less than 0.01

Next, we explore the contemporaneous relationships between our variables. Table 4 displays the two pieces, Σ_0 and Σ_1 , that make up the Cholesky decomposition of the VAR innovation variance-covariance matrix. Each matrix is lower triangular. Of main interest is the off-diagonal component that describes the average *within country* contemporaneous relationship between innovations in excess returns and liquidity, c_{21} . The coefficient is posi-

tive and highly statistically significant for closed markets (the off-diagonal element for Σ_0). It is significantly reduced by the liberalization state (the off-diagonal element for Σ_1), but remains positive. Consequently, shocks to liquidity are positively correlated with return shocks, which in conjunction with the significantly negative lagged liquidity coefficient, is consistent with the Amihud hypotheses that liquidity risk is priced. In both cases, this is more pronounced in markets with lower levels of foreign investability. The standard deviation of both the excess returns and the liquidity variable falls sharply and in a statistically significant manner following equity market liberalization. A simple Wald test of the null hypothesis that $\Sigma_1^{i,j} = 0$ for every (i, j) is sharply rejected with a p-value of less than 0.01. For the U.S. market equations, we find c_{21} to be negative, but it is not significantly different from zero.

Finally, we present evidence on the contemporaneous covariances between local and U.S. shocks. In closed markets, the beta reflecting the covariance between U.S. and local returns is positive but not significant; however, as the degree of investability increases, the beta becomes highly significant, and exceeds one. The majority of the other beta coefficients are not statistically significant, and we do not discuss them further.

In sum, the bivariate VAR of local returns and value-weighted liquidity suggests that the degree of equity market liquidity predicts future excess returns and that shocks to returns and liquidity are positively correlated. These effects are strongest for markets with lower levels of foreign investor access. These results are also preserved in (unreported) country-by-country VARs, with only the shock covariance estimates being statistically significant. Moreover, local sources of predictability are stronger than global sources.

3.4.2 VARs with alternative liquidity measures

Table 5 investigates the robustness of our results across liquidity measures. We report results for bivariate VARs including (value-weighted) returns and four different liquidity measures: one based on equally-weighted zero returns, the equally-weighted price pressure based measure, the value-weighted price pressure measure, and turnover. We only report and discuss the salient features of the dynamics.

First, we investigate the Amihud hypotheses. The coefficient on past liquidity in the re-

turn equation is consistently negative. The coefficient is statistically significant in every case, except for the equally-weighted price pressure measure. Consistent with the benchmark case, the coefficients are much smaller for liberalized countries and no longer statistically significant. One of the main hypotheses underlying the article is thus confirmed: variation in the degree of market integration affects the predictive power of liquidity in the expected direction. Furthermore, we always observe a positive and significant correlation between return and liquidity shocks which is weaker for open markets. The exception is for the equally-weighted price pressure measure where the correlation is insignificant for closed countries but strengthens for open markets.

While we do not report the U.S. dynamics, we find consistently negative coefficients on past liquidity in the return equation, but the coefficients are mostly not significant. Moreover, we fail to find a positive correlation between return and liquidity shocks, confirming that it is harder to find liquidity effects for well-developed markets. When we use an arguably higher quality liquidity measure, based on the zero-volume, zero-returns, we find the opposite: an unexpected positive but insignificant predictability effect and an expected positive and significant correlation between return and liquidity shocks.

Given that equity market turnover is a natural measure for local market trading activity, we also consider a specification which includes total equity market turnover. Neither lagged local, nor U.S. equity market turnover significantly predict future excess returns. However, there appears to be a strong positive contemporaneous relation between return and turnover shocks for segmented countries which is relatively unaffected by the liberalization state. Hence, there is some evidence of a priced liquidity effect. Nevertheless, when we include both turnover and the zeros measure in a trivariate VAR (not reported), the zeros measure retains strong independent pricing effects. Consequently, the zero return based measures may capture features of market liquidity and transaction costs not related to equity market turnover.

Second, the predictive power of returns for future liquidity in closed markets is only significant for the equally-weighted zeros based measure and for turnover, but the coefficient is overall positive consistent with the evidence presented in Griffin, Nardari, and Stulz (2004). Interestingly, for liberalized markets, the coefficient becomes more positive for all measures,

except for the equally-weighted zeros measure and for turnover.

Third, we also report the effect of liberalization on the unconditional averages. For returns, the effects are not robust across measures, and are not statistically significant. For liquidity, the value-weighted measures show significant improvements in liquidity post-liberalization whereas the equally weighted measures show insignificant negative coefficients.

Fourth, in terms of the beta exposures, there is one result that is very robust across the different measures. The return beta with respect to the U.S. market return is around 0.35 to 0.4 for closed countries and rises by about 0.85-0.90 for a fully liberalized country.

3.4.3 Incorporating Dividend Yields in the VAR

It is interesting to consider dividend yields from at least two perspectives. First, suppose dividend growth rates are stochastic but are not very predictable. In this case, variation in the dividend yield will primarily reflect variation in discount rates. Consequently, if liquidity risk is priced and persistent, it will generate time-variation in dividend yields. In particular, because improved liquidity lowers expected returns, we expect the innovations in liquidity and dividend yields to be negatively correlated. In addition, dividend yields may therefore help capture the predictive power of liquidity, so their inclusion in the VAR may decrease the magnitude of the coefficient on L in the return regression. Second, the dividend yield may capture other predictable components in returns. While dividend yields have long been viewed as particularly strong predictors of equity returns, some recent work (e.g. Ang and Bekaert (2006), Engstrom (2003), and Goyal and Welch (2003)) demonstrates that this predictive power may not be statistically robust. Investigating the relative predictive power of the dividend yield and liquidity measures for emerging markets, which show little correlation with established markets, is therefore interesting in its own right.

Table 6 reports a sub-set of the VAR dynamics for a trivariate VAR incorporating dividend yields, while repeating our benchmark VAR results. First, dividend yields do not significantly predict returns, regardless of the liberalization regime consistent with the recent mixed evidence. Further, the U.S. dividend yield does not significantly predict future returns either. The inclusion of the dividend yield slightly increases the parameter associated with the predictability of returns from lagged liquidity, but it remains negative and

statistically significant. If dividend yields and liquidity are negatively correlated, the trivariate coefficient on liquidity should indeed be smaller than the bivariate coefficient we report above. Conversely, because dividend yield variation partially reflects variation in liquidity, it is not surprising to find the coefficient on the dividend yield to be higher (0.0933) and significantly different from zero in a univariate regression of returns on the dividend yield (not reported). As is true in the trivariate VAR, investability substantially undermines the predictive power of the dividend yield but increases the coefficient on the U.S. dividend yield. However, these interaction effects are not significant.

The contemporaneous covariance between liquidity and dividend yield shocks reported in the table is indeed negative and highly significant for closed countries, but the estimate becomes less negative as investability rises. Note that this represents the correlation purged of return effects because of the Cholesky decomposition formulation.

As in the bivariate case, we also present several Wald tests on return predictability. Recall, the null hypotheses are that the first row of \mathbf{A}_0 is 0 for closed countries and the first row of $\mathbf{A}_0 + \mathbf{A}_1$ is 0 under financial openness, when local instruments are considered. As in the bivariate case, the first test rejects the null of no predictability with a p-value of 0.002. The null hypothesis of no return predictability from local factors under openness is not rejected at the 5% level. As in the bivariate case, we surprisingly find evidence of return predictability using global factors only for closed countries.

Of course, it is possible that dividend yields also embed information about cash flows, and controlling for predictable variation in cash flows may alter our results.⁹ To investigate this, we obtain dividend growth rates for all of the countries in our sample. We measure dividends paid out over the previous year in each month for each country. Our dividend growth measure is the monthly log difference of this variable. We add lagged and contemporaneous dividend growth to all three equations (for returns, liquidity, and dividend yields) in the VAR, and re-estimate the system.

Fortunately, incorporating dividend growth rates in the regressions does not affect our results (available upon request). The critical coefficients regarding the pricing of liquidity

⁹Loderer and Roth (2005) examine the effect of liquidity on price-earnings ratios in a cross-sectional context, controlling for earnings growth.

remain almost unaltered. Dividend growth itself generates very few significant coefficients. However, past dividend growth does significantly and positively predict future dividend yields, suggesting that the regression is both controlling for predictable variation in cash flows and leaving the inference regarding liquidity and expected returns generally unaffected.

3.4.4 Alternative interaction effects

In our main results, we explore the effects of global market integration on the pricing of liquidity where the effects are otherwise constrained to be the same across countries of similar levels of financial openness. However, there may be reasons other than the level of financial openness why the pricing of liquidity differs across countries. In this section, we explore a number of alternative interaction effects. The results are summarized in Table 7.

The first set-up we examine is one of regional integration rather than global market integration. Here, we replace the U.S. variables by variables for regional indices. We investigate both a Latin-American and a South-East Asian value-weighted index in two different specifications. The degree of openness index is now simply a dummy variable that indicates whether the country belongs to that region or not.¹⁰ For local predictability, this implies that we simply distinguish regional effects in liquidity pricing. The results for \mathbf{A}_0 and \mathbf{A}_1 in Table 7 suggest that liquidity significantly predicts returns with a coefficient of -0.0238, with the effect more pronounced for East Asian countries as the coefficient becomes marginally more negative. However, the difference is not significant. For Latin-America, the regional effect is stronger, in that the coefficient is significantly less negative for Latin-American countries ($\mathbf{A}_{1,12}$ is 0.0508). The \mathbf{B} -matrices capture potential “contagion” effects outside the region: does liquidity in one region have an effect on returns in other emerging markets. Surprisingly, we find that the predictability effects of East Asian liquidity for local market returns are smaller for countries within the region, but these coefficients are not statistically significant. For the Latin American specification, there is no significant regional effect either. When we look at liquidity pricing in the shocks, we find that for countries outside our regions there is a strong and significantly positive correlation between liquidity and return shocks. However,

¹⁰Notice that we cannot identify a mean effect of belonging to the region or not because of the presence of fixed effects.

the effect is weaker for both East Asian and Latin-American countries, and significantly so in the former case. Finally, local returns are significantly predicted by regional returns, but surprisingly this is true for all countries, not just those countries within the region.

A second obvious interaction variable is the level of transaction costs. We model this with a dummy variable that is one when the country has below median transaction costs. Hence, here we test for a relationship between the average level of liquidity and liquidity pricing. The results are on the third line of Table 7. The results are as expected: countries with lower transaction costs on average display a weaker predictability effect and weaker shock correlation. Nevertheless, the difference in coefficients is not significant in either case.

Third, it is conceivable that the concentration of ownership may play a role in the liquidity of a stock market. La Porta, Lopez-De-Silanes, Shleifer, and Vishny (2000), among others, argue that ownership concentration is negatively correlated with the quality of corporate governance and more generally the legal system. We use a sub-index of the ICRG political risk ratings, namely Law and Order, to proxy for this. The law component is an assessment of the strength and impartiality of the legal system, while the Order component is an assessment of popular observance of the law. The advantage of the measure is that we have it available for all of our countries at a monthly frequency. We rescale the variable to be between 0 (worst) and 1 (best). Law and order proves a stronger differentiator of liquidity effects than does the level of liquidity itself. Countries with a high score for Law and Order have a coefficient on liquidity close to zero in the return regression, and return and liquidity shocks are not correlated at all. In contrast, the Amihud hypotheses are very significant for countries with a low score. The difference in coefficients is only statistically significant for the shocks correlations.

Finally, political risk in itself may help to segment markets. Institutional investors may face constraints on which countries they invest in depending on their political risk ratings. The final line considers the composite political risk rating from ICRG, re-scaled to a (0,1) interval, as the interacting variable. The political risk rating provides the strongest results. In countries with little political risk, liquidity is not priced, whereas it is very strongly priced in countries with substantial political risk. The differences are strongly statistically significant.

4 Liquidity and Expected Asset Returns: A Simple Pricing Model

4.1 Transactions costs and liquidity

In this section, we set out a simple model that considers two channels through which liquidity may affect expected returns: as a transaction cost and as a systematic risk factor. We contrast the implications of liquidity pricing under international market integration and segmentation.

Assuming exogenously determined but proportional transaction costs as in Jones (2002), poor liquidity or high transaction costs drive a wedge between the gross returns that we measure in the data and the actually obtained returns (“net returns”), that is:

$$\exp(r_{t+1}^{\text{net}}) = \frac{\exp(r_{t+1}^{\text{gross}})}{TC_{t+1}}, \quad (9)$$

where $TC_{t+1} \geq 1$ presents a transaction cost measure (if $TC = 1$, there are no transaction costs), and r_{t+1}^{net} and r_{t+1}^{gross} are continuously compounded returns.

We postulate that the log of the transaction cost measure is proportional to the liquidity measure, L , that is:

$$\ln(TC_{t+1}) = vL_{t+1} \quad (v < 0), \quad (10)$$

(9) and (10) hold for each market, i , and for the U.S., w . Recall that our liquidity measure, L , is defined as $\ln(1 - ZR)$, so that a greater incidence of zero returns is associated with a reduction in market liquidity. In general, the coefficient v will be market specific, v_i . Note that we implicitly assume that everybody has the same one-month horizon in which they trade once. Of course, in reality, the trading frequency is endogenous. It is likely that an asset with high transaction costs will be traded less frequently and held longer.¹¹ A zero daily return hopefully reflects the presence of all transaction costs market participants face.

While the transaction cost channel suffices to induce predictable variation in gross expected returns, a rapidly growing literature asserts liquidity risk is priced. For liquidity risk to be priced at the aggregate level, there must be a systematic component to liquidity variation, and overall, stocks must perform poorly when liquidity dries up. In this case, the

¹¹See Amihud and Mendelson (1986) for an interesting analysis of the resulting potential clientele effects, and Huang (2003) for an analysis of the effect of random holding horizons due to liquidity shocks on pricing.

expected equity premium is positively linked to liquidity risk, and shocks to liquidity affect prices. It is informative to explore a simple pricing model where the transactions cost effect and “liquidity risk” interact. In particular, the pricing model should apply to *net* returns but we only observe *gross* returns. Hence, the pricing relations become quite complex even under simple assumptions. We start with a model imposing the assumption of global market integration and then consider the case of perfectly segmented markets.

4.2 Pricing under global market integration

We ignore currency effects, measuring all returns in dollars and assuming a dollar risk-free rate. We assume that there are two risk factors affecting the world pricing kernel: net U.S. market returns ($r_{w,t+1}^{\text{net}}$) and U.S. liquidity ($L_{w,t+1}$). We assume that the log pricing kernel under market integration is given by:

$$m_{t+1}^I = \ln(M_{t+1}^I) = -\gamma_w r_{w,t+1}^{\text{net}} - \gamma_{L,w} L_{w,t+1}, \quad (11)$$

where γ_w is the world price of market risk and $\gamma_{L,w}$ is the world price of liquidity risk. We do not offer a formal model justifying the presence of a liquidity term in the pricing kernel other than appealing to models with aggregate liquidity shocks correlated with preferences (see e.g. Vayanos (2004)) or behavioral models where liquidity partially reflects the presence or absence of rational investors in the market (see e.g. Baker and Stein (2004)). It follows for all returns, $r_{i,t+1}^{\text{net}}$,

$$E_t[\exp(r_{i,t+1}^{\text{net}})M_{t+1}^I] = 1, \quad (12)$$

holds under global market integration.

Let r_t^f be the continuously-compounded risk free interest rate. Assume that all continuously-compounded returns and $L_{w,t+1}$ are jointly normally distributed.¹² Then,

$$r_t^f = -E_t[m_{t+1}] - \frac{1}{2}\text{Var}_t[m_{t+1}]. \quad (13)$$

¹²Despite statistical evidence against normality reported in section 3, we nevertheless maintain the normality assumption for tractability and ease of interpretation of the resulting pricing equations. Moreover, the actual estimation uses a GMM approach and does not rely on normality.

Hence,

$$E_t[r_{i,t+1}^{\text{net}}] = r_t^f - \frac{1}{2}\text{Var}_t[r_{i,t+1}^{\text{net}}] + \gamma_w \text{Cov}_t[r_{i,t+1}^{\text{net}}, r_{w,t+1}^{\text{net}}] + \gamma_{L,w} \text{Cov}_t[r_{i,t+1}^{\text{net}}, L_{w,t+1}^{\text{net}}]. \quad (14)$$

Equation (14) follows from the main pricing equation (12) and the normal distributional assumption, after substituting in (13). Markets that do well when the world market performs well or liquidity is high, require high expected net returns.

To express the model in terms of gross observed returns, we need to solve for the variances and covariances in terms of moments for gross returns in equation (14):

$$\text{Var}_t[r_{i,t+1}^{\text{net}}] = \text{Var}_t[r_{i,t+1}^{\text{gross}} - v_i L_{i,t+1}] \quad (15)$$

$$= \text{Var}_t[r_{i,t+1}^{\text{gross}}] + v_i^2 \text{Var}_t[L_{i,t+1}] - 2v_i \text{Cov}_t[r_{i,t+1}^{\text{gross}}, L_{i,t+1}],$$

$$\text{Cov}_t[r_{i,t+1}^{\text{net}}, r_{w,t+1}^{\text{net}}] = \text{Cov}_t[r_{i,t+1}^{\text{gross}} - v_i L_{i,t+1}, r_{w,t+1}^{\text{gross}} - v_w L_{w,t+1}] \quad (16)$$

$$= \text{Cov}_t[r_{i,t+1}^{\text{gross}}, r_{w,t+1}^{\text{gross}}] + v_i v_w \text{Cov}_t[L_{i,t+1}, L_{w,t+1}]$$

$$- v_i \text{Cov}_t[L_{i,t+1}, r_{w,t+1}^{\text{gross}}] - v_w \text{Cov}_t[r_{i,t+1}^{\text{gross}}, L_{w,t+1}],$$

and

$$\text{Cov}_t[r_{i,t+1}^{\text{net}}, L_{w,t+1}] = \text{Cov}_t[r_{i,t+1}^{\text{gross}}, L_{w,t+1}] - v_i \text{Cov}_t[L_{i,t+1}, L_{w,t+1}]. \quad (17)$$

Combining (9), (10), (14)-(16), we obtain,

$$\begin{aligned} E_t[r_{i,t+1}^{\text{gross}}] - r_t^f &= \gamma_w \text{Cov}_t[r_{i,t+1}^{\text{gross}}, r_{w,t+1}^{\text{gross}}] \leftarrow [\text{world market risk}] \\ &+ (\gamma_{L,w} - \gamma_w v_w) \text{Cov}_t[r_{i,t+1}^{\text{gross}}, L_{w,t+1}] \leftarrow [\text{world liquidity risk}] \\ &+ v_i E_t[L_{i,t+1}] + v_i \text{Cov}_t[L_{i,t+1}, r_{i,t+1}^{\text{gross}}] \leftarrow [\text{local liquidity risk}] \\ &- v_i \gamma_w \text{Cov}_t[L_{i,t+1}, r_{w,t+1}^{\text{gross}}] \leftarrow [\text{cross liquidity-return effect}] \\ &+ (\gamma_w v_i v_w - \gamma_{L,w} v_i) \text{Cov}_t[L_{i,t+1}, L_{w,t+1}] \leftarrow [\text{liquidity covariation effect}] \\ &- \frac{1}{2} \text{Var}_t[r_{i,t+1}^{\text{gross}}] - \frac{1}{2} v_i^2 \text{Var}_t[L_{i,t+1}]. \leftarrow [\text{Jensen's inequality terms}] \end{aligned} \quad (18)$$

The simple pricing relation in (14) for net returns with two risks and a Jensen's inequality term turns into a pricing equation with eight terms. The pricing equation is similar but not identical to that implied by the model of Acharya and Pedersen (2005). First, Acharya and Pedersen's model is a pure transaction cost model so that $\gamma_{L,w}=0$. Second, Acharya and Pedersen's model is formulated in simple returns and does not feature Jensen's inequality

terms. It therefore has only five terms, as both the last line and the $\text{Cov}_t[r_{i,t+1}^{\text{gross}}, L_{i,t+1}]$ term represent Jensen's inequality effects (see equation (15)).

The first term in equation (18) reflects world market risk; the second term reflects world liquidity risk but the price of world liquidity risk is $\gamma_{L,w} - \gamma_w v_w$, not $\gamma_{L,w}$. Assuming positive prices of risk, and with v_w likely negative, this exposure is larger than reflected in the world price of liquidity risk. The extra terms arise because correlation between gross returns and world liquidity contributes to the correlation between net U.S. and local returns. It is useful to immediately contrast this term with the third line: $v_i [E_t[L_{i,t+1}] + \text{Cov}_t[L_{i,t+1}, r_{i,t+1}^{\text{gross}}]]$. These terms reflect pure local liquidity risks. The first component simply captures the assumption that illiquid securities must have higher expected returns because of transactions costs; the second that this expected return is decreasing in the covariance between returns and local liquidity shocks. The latter seems counter intuitive, but arises because positive covariation increases the variance of net returns, which affects expected returns through Jensen's inequality (see equation (15)).

The fourth line shows that a positive covariation between local liquidity and the market return implies a higher expected return. Acharya and Pedersen (2005) offer an extensive economic motivation for why investors may accept a lower return on a security that is liquid in a down market. Using data obtained from the Spanish stock market, Martinez, Nieto, Rubio and Tapia (2005) also find that higher liquidity-return covariances lead to higher expected returns. The fifth line shows that the expected return increases with the covariance between local market liquidity and world market liquidity. This essentially is the commonality-in-liquidity effect referred to by Chordia, Roll, and Subrahmanyam (2001), Hasbrouck and Seppi (2000), and Huberman and Halka (2001). In the context of our global pricing framework, applied to emerging markets, both the cross-liquidity return and liquidity covariance effects may be expected to be small. It is not likely that, for emerging markets, local liquidity covaries much with U.S. returns or U.S. liquidity. The final line represents the Jensen's inequality terms. What is most striking about the pricing framework developed here is that even under global market integration, local factors enter the asset pricing equation.

4.3 Pricing under market segmentation

Under segmentation, the price of local liquidity and the local equity return enter the pricing kernel:

$$m_{t+1}^S = \ln(M_{t+1}^S) = -\gamma_i r_{i,t+1}^{\text{net}} - \gamma_{L,i} L_{i,t+1} \quad (19)$$

Under joint normality,

$$E_t[r_{i,t+1}^{\text{net}}] = r_t^f - \frac{1}{2} \text{Var}_t[r_{i,t+1}^{\text{net}}] + \gamma_i \text{Var}_t[r_{i,t+1}^{\text{net}}] + \gamma_{L,i} \text{Cov}_t[r_{i,t+1}^{\text{net}}, L_{i,t+1}^{\text{net}}]. \quad (20)$$

Notice that r_t^f is a domestic interest rate and the model would normally apply to local excess returns. However, the use of local excess returns in emerging markets is hampered by the presence of extreme returns and interest rates in the data. Therefore, we follow most of the literature and formulate the model in U.S. dollars. If uncovered interest parity holds, our expected excess return expressions are identical for local currency or dollar returns. Again, we must transform net into gross returns. We use:

$$\text{Cov}_t[r_{i,t+1}^{\text{net}}, L_{i,t+1}] = \text{Cov}_t[r_{i,t+1}^{\text{gross}}, L_{i,t+1}] - v_i \text{Var}_t[L_{i,t+1}] \quad (21)$$

and the expression for $\text{Var}_t[r_{i,t+1}^{\text{net}}]$ in Equation (15), to obtain:

$$\begin{aligned} E_t[r_{i,t+1}^{\text{gross}}] - r_t^f &= (\gamma_i - \frac{1}{2}) \text{Var}_t[r_{i,t+1}^{\text{gross}}] \\ &\quad [\gamma_{L,i} - (\gamma_i - \frac{1}{2}) 2v_i] \text{Cov}_t[r_{i,t+1}^{\text{gross}}, L_{i,t+1}] \\ &\quad v_i E_t[L_{i,t+1}] + v_i [v_i (\gamma_i - \frac{1}{2}) - \gamma_{L,i}] \text{Var}_t[L_{i,t+1}] \end{aligned} \quad (22)$$

While the same risks are present in the integrated model as well, now they have different coefficients. Assume, $\gamma_i > \frac{1}{2}$ and $\gamma_{L,i} > 0$. The variance of liquidity then features a positive coefficient even when a Jensen's inequality is accounted for. Whereas the covariance between local returns and local liquidity surprisingly receives a negative coefficient in the model under integration, it has the expected positive coefficient here as it represents a genuine liquidity risk. However, the price of risk is not $\gamma_{L,i}$, but potentially larger due to the relation between transaction costs and liquidity variation. Again, the expression for expected returns contains a transactions cost term, $v_i E_t[L_{i,t+1}]$, and a term in the variance of liquidity. The latter represents a Jensen's inequality effect, and covariation terms that arise from the correlation

between transaction costs and aggregate liquidity risks. These terms simplify because we use aggregate country portfolios. The indirect transaction costs term through the variance of liquidity features a positive coefficient under the assumptions above and counter-balances the direct transactions costs effect.

4.4 Model Parametrization

Because our models feature a number of country-specific parameters entailing a rather large parameter space, we model them as a time-invariant function of country-specific instruments, $z_{i,t}$. In the benchmark model, $z_{i,t} = Lib_{i,t}$. The transactions costs parameter is then modeled as

$$v_i = v_I Lib_{i,t} + v_S(1 - Lib_{i,t}) \quad (23)$$

Hence, v_i only depends on two common parameters which distinguish transaction cost effects across liberalized and non-liberalized markets. Consistent with this assumption, we let $\gamma_i = \gamma_S$ and $\gamma_{L,i} = \gamma_{L,S}$. We estimate three parsimonious models which are all special cases of the following encompassing model.

$$\begin{aligned} E_t[r_{i,t+1}^{gross}] - r_t^f &= v_i E_t[L_{i,t+1}] + \theta_{i,t}^1 \text{Var}_t[r_{i,t+1}^{gross}] \\ &\quad + \theta_{i,t}^2 \text{Var}_t[L_{i,t+1}] + \theta_{i,t}^3 \text{Cov}_t[L_{i,t+1}, r_{i,t+1}^{gross}] \\ &\quad + \theta_{i,t}^4 \text{Cov}_t[L_{i,t+1}, r_{w,t+1}^{gross}] + \theta_{i,t}^5 \text{Cov}_t[L_{i,t+1}, L_{w,t+1}] \\ &\quad + \theta_{i,t}^6 \text{Cov}_t[r_{i,t+1}^{gross}, L_{w,t+1}] + \theta_{i,t}^7 \text{Cov}_t[r_{i,t+1}^{gross}, r_{w,t+1}^{gross}]. \end{aligned} \quad (24)$$

where $\theta_{i,t}^j$ is the parameter function for the j^{th} priced risk in country i :

$$\theta_{i,t}^j = \theta_S^j(1 - Lib_{i,t}) + \theta_I^j Lib_{i,t} \quad (25)$$

Two of the models we investigate impose the theoretical restrictions of complete integration or segmentation implied by the models derived in Section 4.2 and 4.3. The third model mixes the two. In summary,

	Mixed model	Full integration	Full segmentation
v_i	$v_I Lib_{i,t} + v_S(1 - Lib_{i,t})$	v_I	v_S
$\theta_{i,t}^1$	$(-\frac{1}{2})Lib_{i,t} + (\gamma_S - \frac{1}{2})(1 - Lib_{i,t})$	$-\frac{1}{2}$	$\gamma_S - \frac{1}{2}$
$\theta_{i,t}^2$	$(-\frac{1}{2})v_I^2 Lib_{i,t} + v_S[(\gamma_S - \frac{1}{2})v_S - \gamma_{L,S}](1 - Lib_{i,t})$	$-\frac{1}{2}v_I^2$	$v_S[v_S(\gamma_S - \frac{1}{2}) - \gamma_{L,S}]$
$\theta_{i,t}^3$	$v_I Lib_{i,t} + [\gamma_{L,S} - (\gamma_S - \frac{1}{2})2v_S](1 - Lib_{i,t})$	v_I	$\gamma_{L,S} - (\gamma_S - \frac{1}{2})2v_S$
$\theta_{i,t}^4$	$-v_I \gamma_w Lib_{i,t}$	$-v_I \gamma_w$	0
$\theta_{i,t}^5$	$(\gamma_w v_I - \gamma_{L,w})v_I Lib_{i,t}$	$(\gamma_w v_I - \gamma_{L,w})v_I$	0
$\theta_{i,t}^6$	$(\gamma_{L,w} - \gamma_w v_I) Lib_{i,t}$	$(\gamma_{L,w} - \gamma_w v_I)$	0
$\theta_{i,t}^7$	$\gamma_w Lib_{i,t}$	γ_w	0

The fully segmented model has only three parameters, the fully integrated model has four parameters (including v_w) and the mixed model has seven parameters. The mixed model reduces to one of the extreme models when the financial openness indicator is either 0 or 1. We also investigate the relative role of the two channels through which liquidity can affect expected returns: transaction costs or systematic liquidity risk exposures. To focus on the first, we set $\gamma_{L,w} = \gamma_{L,S} = 0$; to focus on the latter, we set $v_w = v_i = 0$.

We also estimate VARs with alternative interaction variables: the level of liquidity, a law and order index, and a political risk index. We postulate that these variables may capture cross-country variation in the transaction costs or prices of risk. We therefore define.

$$v_{k,i} = v_{k,0} + v_{k,1}z_{i,t} \quad (26)$$

with $k = I, S$, and

$$\gamma_{S,i} = \gamma_{S,0} + \gamma_{S,1}z_{i,t} \quad (27)$$

$$\gamma_{L,S,i} = \gamma_{L,S,0} + \gamma_{L,S,1}z_{i,t}. \quad (28)$$

We expect that countries with lower liquidity levels, poorer law and order conditions, or higher political risks face greater prices of risk and transaction costs. Consequently, we anticipate $v_{k,1} > 0$, $\gamma_{S,1} < 0$, and $\gamma_{L,S,1} < 0$. We estimate these models under the same market integration hypotheses we explore and impose for the benchmark model: full integration, full segmentation, and a mixed model. Parameters in the table are replaced by the parameterizations in equations (26)-(28). Ignoring v_w , the full integration (full segmentation) model now has 4 (6) parameters; the mixed model has 10.

We also consider an alternative mixed model. In this model, we view liquidity levels, political risk, or poor corporate governance proxied by the law and order variable as potential sources of market segmentation. This simply corresponds to replacing the $Lib_{i,t}$ variable under “mixed model” in the table by $z_{i,t}$. For example, when the political risk index equals 1 (meaning no political risk), the γ_i 's are from the integrated model. When the index equals 0, the segmentation model applies, but the prices of risk do not vary directly with $z_{i,t}$.

4.5 Estimation

Before we can estimate the model, we must make auxiliary assumptions concerning the dynamics of expected returns and conditional second moments. Our model essentially constrains the relation between the two but to test the model restrictions, we must exogenously specify either volatility or expected return dynamics. We choose to follow the pricing framework of Campbell (1987) and Harvey (1989, 1991) in which expected returns are assumed to be exact linear functions of a set of instruments. Denote the residuals from these projections as

$$\mathbf{u}_t = [\mathbf{u}_{i,t}, u_{w,t}, \mathbf{u}_{L_i,t}, u_{L_w,t}] \text{ for } i = 1, \dots, N. \quad (29)$$

We assume that

$$E[\mathbf{u}_t | \mathbf{I}_{t-1}] = 0. \quad (30)$$

This is a strong assumption, as it requires returns and the liquidity measure to exhaust the information set (see Harvey (1991) for further discussion).

The model can be estimated in two steps. First, our previously estimated vector autoregressive systems determine the \mathbf{u}_t . Second, we obtain model residuals for use in a panel GMM estimation:

$$\begin{aligned} e_{w,t+1} &= r_{w,t+1} - r_{f,t} - v_w L_{w,t+1} - \gamma_w u_{w,t+1}^2 - \gamma_{L,w} u_{w,t+1} u_{L_w,t+1} \\ e_{i,t+1} &= r_{i,t+1} - r_{f,t} - v_i L_{i,t+1} - \theta_{i,t}^1 u_{i,t+1}^2 - \theta_{i,t}^2 u_{L_i,t+1}^2 - \theta_{i,t}^3 u_{L_i,t+1} u_{i,t+1} \\ &\quad - \theta_{i,t}^4 u_{L_i,t+1} u_{w,t+1} - \theta_{i,t}^5 u_{L_i,t+1} u_{L_w,t+1} - \theta_{i,t}^6 u_{i,t+1} u_{L_w,t+1} - \theta_{i,t}^7 u_{i,t+1} u_{w,t+1}. \end{aligned}$$

The orthogonality conditions to estimate this system can be summarized as follows:

$$\mathbf{g}_{t+1} = \begin{bmatrix} e_{w,t+1} \otimes \mathbf{x}_{w,t} \\ e_{i,t+1} \otimes (\mathbf{x}_{i,t}, z_{i,t}) \end{bmatrix}, \quad (31)$$

where we set $z_{i,t}$ equal to the interaction variables, including financial openness, employed in the VAR. In our empirical work, we primarily focus on the benchmark case, $\mathbf{x}_{i,t} = [r_{i,t}, L_{i,t}]$, corresponding to the bivariate VAR. For the emerging markets, the system has 72 orthogonality conditions for our baseline specification (with 18 extra for interaction analysis), where our least parsimonious model has only 10 parameters (the U.S. system has 3 additional conditions).

We use two specification tests. First, we report the standard test of over-identifying restrictions. Second, we compute a metric which weights the moment conditions by the inverse of the inner product of the raw returns with the lagged instrument set. In contrast to the optimal GMM weighting matrix which is model specific, this weighting scheme is constant across all models, and thus facilitates a comparison of our non-nested models. The metric is related to but not identical to the popular Hansen and Jagannathan (1991) distance metric, which measures the distance between the implied pricing kernel and the region of acceptable pricing kernels. The distance measure is given by:

$$\{E[g_{t+1}]'E[(R_{i,t+1} \otimes (\mathbf{x}_{i,t}, z_{i,t}))(R_{i,t+1} \otimes (\mathbf{x}_{i,t}, z_{i,t}))']^{-1}E[g_{t+1}]\}^{1/2}. \quad (32)$$

While it would be possible, building on results regarding the HJ distance measure, to derive the asymptotic distribution of the statistic (see Jagannathan and Wang (1996)), this distribution is likely to be a poor approximation to the true small sample distribution (see Ahn and Gadarowski (2004) and Kan and Zhou (2002)). Therefore, we simply use the distance measure as a statistic to compare models.

4.6 Empirical results

Our bivariate VARs, estimated above, deliver the *unexpected* return and liquidity shocks for each country used in the GMM estimation. It is important to note that the standard errors we will report ignore the sampling error associated with this first stage VAR and hence likely

underestimate the true standard errors. We pre-estimate the U.S. parameters using a longer sample from 1962-2003 from CRSP. This ensures that the world parameters are estimated with maximal precision and are identical across models. It is difficult to identify both v_w and $\gamma_{L,w}$; therefore, we first consider a model where $v_w=0$. The resulting model fits the data as well as the model with non-zero v_w and has positive prices of risk. The price of world market risk is 2.848 and significant. The price of world liquidity risk is 57.240, but imprecisely estimated. We will report an alternative model with $v_w \neq 0$ and $\gamma_{L,w}=0$ as well.

4.6.1 *Benchmark Model*

Table 8 (panel A) presents the results for the three basic theoretical models associated with either a fully integrated case, a fully segmented case, or a mixed variant. Note that all models we consider are rejected with p-values below 0.01 based upon the tests of the over-identifying restrictions. While the J -test is known to over-reject the null hypothesis in small samples, these statistics are quite large suggesting that asset pricing in the emerging market context is very challenging. For this reason, we focus instead on the economic information that can be extracted from these cases. Given the limited time-series for emerging markets, however, inference could be different with more data.

To begin, we present the fully integrated case, for which we estimate only one new parameter, v_I – the gross to net return adjustment; γ_w – the pre-estimated price of world market risk, and $\gamma_{L,w}$ – the pre-estimated price of world market liquidity risk are discussed above. The gross to net adjustment parameter is negative but not significantly different from zero. Evaluated at the average zero, this term represents about 4 basis points per month, a small but reasonable estimate. Of the models under consideration in panel A, the fully integrated model has the largest distance statistic, suggesting that this model does a *relatively* poor job of explaining emerging markets returns.

Next, we consider the case of full segmentation. This model involves the estimation of three parameters: v_S – the gross to net return adjustment, γ_S – the price of local market risk, and $\gamma_{L,S}$ – the price of local market liquidity risk. The v_S parameter is similar to v_I , and is also not significantly different from zero. The local price of market risk is not significant; however, the price of local liquidity risk is positive and significant. Of the main models

considered, the fully segmented model is associated with the lowest distance metric. These estimates suggest a 53 and 27 basis points per month compensation for local market and liquidity risk, respectively.

As the markets under exploration in this study are neither fully segmented nor integrated, we also consider the mixed model where risk compensation varies over the financial openness proxy. In this case, the gross to net adjustment parameter is negative (but not significant) for fully segmented markets, but becomes an insignificant positive number for markets displaying greater foreign investor access. The price of local market risk is not significantly different from zero; however, the price of local liquidity risk is positive and highly significant. Nevertheless, the distance associated with the mixed model exceeds that of the full segmentation model. For segmented markets, these estimates suggest a -34 and 62 basis point per month compensation for local market and liquidity risk, respectively. For integrated markets, these estimates suggest a 44 and -31 basis point per month compensation for global market and liquidity risk, respectively (the latter due to a negative covariance).

We consider three alternative specifications. In the first and second, we consider alternatives where we shut down either the gross to net return transaction costs adjustments, v_i , or the prices of risks associated with local and global systematic liquidity, $\gamma_{L,S}$ and $\gamma_{L,w}$ respectively. The removal of a transaction costs effect still yields a positive and significant price of local liquidity risk, but the price of market risk remains negative. The removal of all systematic liquidity pricing makes the local price of market risk positive, but it remains insignificantly different from zero. The v -parameters are now both negative. This model actually yields a distance metric that is quite close to that of the full segmentation model. We also report an alternative mixed model where the model for U.S. returns sets $\gamma_{L,w} = 0$, instead of $v_w = 0$. We find that v_w is -0.058 and marginally different from zero, but the price of world market risk is negative. The local prices of risk and transaction cost parameters are rather similar to the ones we estimated before, only that the price of local market liquidity risk is somewhat higher.

Finally, we also estimate the general mixed model, but we replace the value-weighted zero return liquidity measure with its equal-weighted counterpart. The pre-estimated U.S. pricing evidence is very similar to the equal-weighted liquidity case, but the price of world

liquidity risk is now marginally significant. Here, the gross-to-net return transaction cost adjustment has the wrong sign and is not significant for segmented markets, but the price of local liquidity risk is large and strongly significant.

Taken together, it is very clear that the various channels for risk compensation are extremely difficult to estimate with precision. However, the evidence on the price of local market risk is fairly robust across the cases considered here, strongly suggesting that local market liquidity is an important driver of expected returns in emerging markets, and that the liberalization process has not eliminated its impact. Models with an important role for local liquidity risks and allowing segmentation do not only out-perform on the distance measure criterion, but also generate the highest cross-sectional correlation between average returns over the sample with the expected returns generated by the various models. The best model here is the market segmentation (panel A) model, for which the correlation between expected and average returns is 0.63, but the alternative that ignores liquidity risk also has a large correlation.

4.6.2 *Alternative Pricing Models*

Panel B of Table 8 reports the results for the models that use alternative instruments as interaction variables for the model parameters or as alternative “integration” indicators. For these models, we use the model residuals from the alternative VARs that we estimated using these instruments discussed in Section 3.4.4. The distance measures are therefore not strictly comparable to the ones in Panel A.

We start with the liquidity indicator. The fully integrated model yields the counterintuitive result that countries with better liquidity have a much larger (in absolute magnitude) transaction cost parameter than countries with low liquidity, whereas the transaction cost parameter is not significantly different from zero for low liquidity countries. The fully segmented model is again the best performing model in terms of the distance measure and the parameter estimates are reasonable. There is no significant difference between high and low transaction cost countries in terms of transaction cost parameters, but market (liquidity) risk is significantly more (less) priced in low transaction cost countries. The mixed model is indeed a mix of the fully integrated and segmented models, but its distance measure exceeds

that of the fully segmented model. Finally, viewing the liquidity indicator as an effective openness indicator does not improve the performance of the model.

When the political risk indicator is used as an instrument, the transaction cost parameters for the fully integrated model are as expected: negative and significant for countries with high political risk, but positive or close to zero for countries with little political risk. Again, the fully segmented model performs better, but this time, two of the interaction effects are unexpected. The transaction cost parameter is only negative for countries with low political risk (although it is insignificant) and market risk is effectively not priced for these countries. However, local liquidity risk is not priced for these countries either. The mixed model appears over-parameterized with many insignificant coefficients and a distance measure that is much worse than the one for the segmented model. By far the best is the model where the political risk indicator is used as an effective market integration indicator. Here, countries with low political risk are assigned integrated world pricing and for such countries v_I is positive and not significantly different from zero. However, countries with high political risk follow a segmented pricing model with a negative but insignificant v_S parameter and significant local market and liquidity risks.

The models for the law and order index behave similarly to these for the political risk index. For both the segmented and integrated models, countries with a higher score on law and order have higher transaction cost parameters, which is counter-intuitive, however, the relative pricing of local market and liquidity risks in the fully segmented model makes sense: market (liquidity) risk is only important for countries with high (low) scores on the law and order index. The mixed model again does not perform well, but using the law and order index as an indicator of market integration yields by far the lowest distance measure. The only surprise is that v_I is negative and v_S is positive, both significantly so. This perhaps indicates that the model still needed to find a channel through which to price in local liquidity for the countries that score well on law and order, whereas the high and significant price of local liquidity risk suffices for the countries with low scores. In all, our results suggest that political risk and law and order may well be as important indicators of effective market integration as an openness index. Moreover, we find again consistent evidence of a positive price of local liquidity risk.

5 Conclusions

There is a growing consensus that systematic variation in liquidity matters for expected returns. We examine this issue for a set of markets where liquidity ought to be particularly important – emerging markets. We start by proposing a measure of liquidity and transaction costs, first analyzed by Lesmond (2005) and Lesmond, Ogden and Trzcinka (1999): the proportion of daily zero firm returns averaged over the month. The measure is easy to compute and, as expected, is indeed positively correlated with bid-ask spreads (where available) and negatively correlated with equity market turnover. We use the measure in a panel VAR model for 18 emerging countries where we test the hypotheses for liquidity pricing put forward by Amihud (2002). We indeed find that the zero measure significantly predicts returns, and unexpected liquidity shocks are positively correlated with returns and negatively correlated with dividend yields.

Finally, we formulate and estimate a simple pricing model, which, apart from market risk, separates the transaction cost and systematic risk effects of liquidity variation on expected returns. For emerging markets, there is the added complication that the market may be segmented or integrated. Many of the markets that we examine underwent a liberalization process and liberalization may affect the dynamic relation between returns and liquidity. We consider several models that allow for local or world market and liquidity risks depending on whether a country is integrated or segmented. Interestingly, when liquidity is priced, local factors matter even under the hypothesis of global market integration. We also find local systematic liquidity risk to be important empirically, much more so than local market risk. We also find that elevated political risk and poor law and order conditions may serve as effective segmentation indicators and there is a much larger role for liquidity in expected returns in countries with these properties.

In future work, we intend to apply our asset pricing framework to developed markets. While we expect less cross-country variation in liquidity in these markets, the richer data will allow us to build more intricate measures of liquidity and construct powerful tests of whether liquidity is globally and locally priced.

6 References

- Acharya, V.V. and L.H. Pedersen, 2005, Asset Pricing with Liquidity Risk, *Journal of Financial Economics* 77, 375–410.
- Ahn, S.C. and C. Gadarowski, 2004, Small Sample Properties of the GMM specification test based on the Hansen-Jagannathan Distance, *Journal of Empirical Finance* 11, 109–132.
- Amihud, Y., 2002, Illiquidity and Stock Returns: Cross Section and Time Series Effects, *Journal of Financial Markets* 5, 2002, 31-56.
- Amihud, Y. and H. Mendelson, 1986, Asset Pricing and the Bid-Ask Spread, *Journal of Financial Economics* 17, 223-249.
- Ang, A. and G. Bekaert, 2006, Stock Return Predictability: Is it There?, forthcoming, *Review of Financial Studies*.
- Atje, R., and B. Jovanovic, 1989, Stock Markets and Development, *European Economic Review* 37, 632-640.
- Baker, M. and J. C. Stein, 2004, Market Liquidity as a Sentiment Indicator, *Journal of Financial Markets* 7, 271–299.
- Bekaert, G., 1995, Market Integration and Investment Barriers in Emerging Equity Markets, *World Bank Economic Review* 9, 75-107.
- Bekaert, G. and C. R. Harvey, 1995, Time-varying World Market Integration, *Journal of Finance* 50, 403-444.
- Bekaert, G. and C. R. Harvey, 1997, Emerging Equity Market Volatility, *Journal of Financial Economics* 43, 29-78.
- Bekaert, G. and C. R. Harvey, 2000, Foreign Speculators and Emerging Equity Markets, *Journal of Finance* 55, 565-614.
- Bekaert, G., C. R. Harvey and R. Lumsdaine, 2002, Dating the Integration of World Capital Markets, *Journal of Financial Economics* 65:2, 2002, 203-249.
- Bekaert, G., C. R. Harvey and C. Lundblad, 2005, Does Financial Liberalization Spur Growth?, *Journal of Financial Economics* 77, 3–56.
- Bessembinder, H. 2003, Issues in Assessing Trade Execution Costs, *Journal of Financial Markets*, 6, 233-257.
- Biais, B., 1993, Price Formation and Equilibrium Liquidity in Fragmented and Centralized Markets, *Journal of Finance*, 48, 157-185.
- Bollerslev, T. and J. Wooldridge, 1992, Quasi-maximum Likelihood Estimation of Dynamic Models with Time Varying Covariances, *Econometric Reviews* 11, 143-172.
- Brennan, M.J., T. Chordia and A. Subrahmanyam, 1998, Alternative Factor Specifications, Security Characteristics, and the Cross-section of Expected Stock returns, *Journal of Financial*

Economics 49, 345–373.

- Brennan, M.J. and A. Subrahmanyam, 1996, Market Microstructure and Asset Pricing: On the Compensation for Illiquidity in Stock Returns, *Journal of Financial Economics* 41, 441-464.
- Campbell, J.Y., 1987, Stock Returns and the Term Structure, *Journal of Financial Economics*
- Chalmers, J. M. and G. B. Kadlec, 1998, An Empirical Examination of the Amortization Spread, *Journal of Financial Economics* 48, 159-188.
- Chordia, T., R. Roll and A. Subrahmanyam, 2000, Commonality in liquidity, *Journal of Financial Economics* 56, 3–28.
- Chordia, T., R. Roll and A. Subrahmanyam, 2001, Market Liquidity and Trading Activity, *Journal of Finance* 56, 501–530.
- Chordia, T., R. Roll and A. Subrahmanyam, 2004, Order Imbalance, Liquidity, and Market Returns, *Journal of Financial Economics*, 72, 485-518.
- Chordia, T., Sarkar, A. and A. Subrahmanyam, 2005, An Empirical Analysis of Stock and Bond Market Liquidity, *Review of Financial Studies*, 18, 85-129.
- Chordia, T., A. Subrahmanyam, and R. Anshuman, 2001, Trading Activity and Expected Stock Returns, *Journal of Financial Economics* 59, 3–32.
- Chuhan, P., 1992, Are Institutional Investors an Important Source of Portfolio Investment in Emerging Markets?, World Bank Working Paper N. 1243.
- Constantinides, G., 1986, Capital Market Equilibrium with Transactions Costs, *Journal of Political Economy* 94, 842-862.
- Datar, V. T., N. N. Naik, and R. Radcliffe, 1998, Liquidity and Asset Returns: An Alternative Test, *Journal of Financial Markets* 1, 203–219.
- de Jong, F. and F. de Roon, 2005, Time-varying Market Integration and Expected Returns in Emerging Markets, *Journal of Financial Economics* 78, 583–613
- Domowitz, I., J. Glen, and A. Madhavan, 2001, Liquidity, Volatility, and Equity Trading Costs Across Countries and Over Time, *International Finance*, 221-255.
- Easley, D. and M. O’Hara, 1987, Price, Trade Size, and Information in Securities Markets, *Journal of Financial Economics* 19, 69-90.
- Easley, D., Hvidkjaer, S. and M. O’Hara, 2002, Is Information Risk a Determinant of Asset Returns? *Journal of Finance*, 2185-2221.
- Edison, H. and F. Warnock, 2003, A Simple Measure of the Intensity of Capital Controls, *Journal of Empirical Finance* 10, 81-104.
- Eisfeldt, A. L., 2004, Endogenous Liquidity in Asset Markets, *Journal of Finance*, 59, 1-30.
- Engstrom, E. 2003, The Conditional Relationship Between Stock Returns and the Dividend Price Ratio, Working paper, Board of Governors, Federal Reserve System, Washington, D.C.
- Fiori, F., 2000, Liquidity Premia in the Equity Markets: An Investigation into the Charac-

- teristics of Liquidity and Trading Activity, Working paper, University of Chicago, Chicago, IL.
- French, K., G.W. Schwert, and R.F. Stambaugh, 1987, Expected Stock Returns and Volatility, *Journal of Financial Economics*, 19, 3-30.
- Ghysels, E. and M. Cherkaoui, 2003, Emerging Markets and Trading Costs: Lessons from Casablanca, *Journal of Empirical Finance* 10, 169–198.
- Glosten, L.R., R. Jagannathan, and D. Runkle, 1993, On the Relation between the Expected Value and the Volatility of the Normal Excess Return on Stocks, *Journal of Finance*, 48, 1779-1801.
- Glosten, L. and P. Milgrom, 1985, Bid, Ask and Transaction Prices in a Specialist Market with Heterogeneously Informed Traders, *Journal of Financial Economics*, 14, 71-100.
- Goyal, A., and I. Welch, 2003, The Myth of Predictability: Does the Dividend Yield Forecast the Equity Premium?, *Management Science*, 49, 639-654.
- Goyenko, R., 2005, Stock and Bond Pricing with Liquidity Risk, working paper, Indiana University.
- Goyenko, R., C. Holden, C. Lundblad, and C. Trzcinka, 2005, Horseraces of Monthly and Annual Liquidity Measures, working paper, Indiana University.
- Griffin J.M., F. Nardari F, and R.M. Stulz, 2004, Are Daily Cross-border Equity Flows Pushed or Pulled?, *Review of Economics and Statistics* 86, 641–657.
- Grossman, S.J. and M.H. Miller, 1988, Liquidity and Market Structure, *Journal of Finance* 43, 617-633.
- Hansen L., 1982, Large Sample Properties of Generalized Method of Moments Estimators, *Econometrica*, 50, 1029-1054.
- Harris, L., 1990, Statistical Properties of the Roll Serial Covariance Bid/Ask Spread Estimator, *Journal of Finance* 45, no. 2, 579-590.
- Harvey, C.R., 1989, Time-Varying Conditional Covariances in Tests of Asset Pricing Models, *Journal of Financial Economics* 24, 289-317.
- Harvey, C.R., 1991, The World Price of Covariance Risk, *Journal of Finance* 46, 111-157.
- Harvey, C.R., 1995, Predictable Risk and Returns in Emerging Markets, *Review of Financial Studies* 8, 773–816.
- Hasbrouck, J., 2004, Liquidity in the Futures Pit: Inferring Market Dynamics from Incomplete Data, *Journal of Financial and Quantitative Analysis*, 39, 305-326.
- Hasbrouck, J., 2005, Trading Costs and Returns for US equities: The Evidence from Daily Data. Unpublished working paper, New York University.
- Hasbrouck, J. and D. J. Seppi, 2000, Common Factors in Prices, Order Flows and Liquidity, *Journal of Financial Economics* 59, 383–412.
- Heaton, J. and D. Lucas, 1996, Evaluating the Effects of Incomplete Markets on Risk Sharing

- and Asset Prices, *Journal of Political Economy* 104, 443-487.
- Henry, P., 2000, Stock Market Liberalization, Economic Reform, and Emerging Market Equity Prices, *Journal of Finance* 55, 529-564
- Hodrick, L.S. and P.C. Moulton, 2005, Liquidity: Considerations of Portfolio Manager, Unpublished working paper, Columbia University.
- Hodrick, R., 1992, Dividend Yields and Expected Stock Returns: Alternative Procedures for Inference and Measurement, *Review of Financial Studies* 5, 3, 357-386.
- Holmstrom, B. and J. Tirole, 2002, LAPM: A Liquidity-based Asset Pricing Model, *Journal of Finance*.
- Huang, M., 2003, Liquidity Shocks and Equilibrium Liquidity Premia, *Journal of Economic Theory* 109, 104-129.
- Huberman, G. and D. Halka, 2001, Systematic Liquidity, *Journal of Financial Research* 24, 161-178.
- Jain, P., 2002, Institutional Design and Liquidity on Stock Exchanges, Working paper, Indiana University.
- Jain-Chandra, S., 2002, The Impact of Stock Market Liberalization on Liquidity and Efficiency in Emerging Equity Markets, working paper.
- Jones, C., 2002, A Century of Stock Market Liquidity and Trading Costs, Working paper, Columbia University, NY.
- Kan, R. and G. Zhou, 2002, Towards a Better Understanding of the Beta Method and the Stochastic Discount Factor Method, working paper.
- Karolyi, G.A., 2006, The World of Cross-Listings and Cross-Listings of the World: Challenging Conventional Wisdom, *Review of Finance* 10, 99-152.
- Koren, M. and A. Szeidl, 2002, Portfolio Choice with Illiquid Assets, Working paper, Harvard University, Cambridge, MA.
- Kyle, A. P., 1985, Continuous Auctions and Insider Trading, *Econometrica* 1315-1336.
- La Porta R., F. Lopez-De-Silanes, A. Shleifer, and R. Vishny, 2000, Investor Protection and Corporate Governance, *Journal of Financial Economics* 58, 3-27.
- Lesmond, D. A., 2005, The Costs of Equity Trading in Emerging Markets, *Journal of Financial Economics* 77, 411-452.
- Lesmond, D. A., J. P. Ogden, C. Trzcinka, 1999, A New Estimate of Transaction Costs, *Review of Financial Studies* 12, 1113-1141.
- Levine, R. and S. Schmukler, 2006, Internationalization and Stock Market Liquidity, *Review of Finance* 10, 153-187.
- Levine, R. and S. Zervos, 1998, Stock Markets, Banks, and Economic Growth, *American Economic Review* 88:3, 537-558.
- Lo, A.W., H. Mamaysky and J. Wang, 2004, Asset Prices and Trading Volume under Fixed

- Transactions Costs, *Journal of Political Economy* 112, 1954–1090.
- Loderer, C. and L. Roth, 2005, The Pricing Discount for Limited Liquidity: Evidence from SWX Swiss Exchange and the Nasdaq, *Journal of Empirical Finance* 12, 239-268.
- Lowengrub, P. and M. Melvin, 2002, Before and After International Cross-listing: An Intraday Examination of Volume and Volatility, *Journal of International Financial Markets, Institutions and Money*, 12, 139-155.
- Martinez, M., B. Nieto, G. Rubio and M. Tapia, 2005, Asset Pricing and Systematic Liquidity Risk: An Empirical Investigation of the Spanish Stock Market, *International Review of Economics and Finance* 14, 81–103.
- Newey, W., and K. West, 1987, A Simple, Positive Semi-Definite, Heteroskedasticity and Autocorrelation Consistent Covariance Matrix, *Econometrica*, 55, 703-708.
- O’Hara, M., 2003, Liquidity and Price Discovery, *Journal of Finance* 58, 4 1335-1354.
- Pagano, M, 1989, Endogenous Market Thinness and Stock-price Volatility, *Review of Economic Studies*, 56, 269-288.
- Pastor, L. and R.F. Stambaugh, 2003, Liquidity Risk and Expected Stock Returns, *Journal of Political Economy* 111, 642–685.
- Roll R. 1984, A Simple Implicit Measure of the Effective Bid-ask spread in an Efficient Market, *Journal of Finance* 39, 1127-1140.
- Sadka, R., 2006, Momentum and Post-earnings-announcement Drift Anomalies: The Role of Liquidity Risk, *Journal of Financial Economics* 80, 309–349.
- Spiegel, M. and A. Subrahmanyam, 1992, Informed Speculation and Hedging in a Noncompetitive Securities Market, *Review of Financial Studies* 5(2), 307-329.
- Stambaugh, R.F., 1999, Predictive Regressions, *Journal of Financial Economics* 54, 375-421.
- Vayanos, D., 1998, Transactions Costs and Asset Prices: A Dynamic Equilibrium Model, *Review of Financial Studies* 11, 1-58.
- Vayanos, D., 2004, Flight to Quality, Flight to Liquidity, and the Pricing of Risk, working paper, London School of Economics.
- Wang, J., 1993, A Model of Inter-temporal Asset Prices Under Asymmetric Information, *Review of Economic Studies* 60, 249-282.
- Zakoian, J. M., 1994, Threshold Heteroskedastic Models, *Journal of Economics Dynamics and Control*, 18, 931-955.

Table 1
Summary statistics
January 1987-December 2003

	Argentina	Brazil	Chile	Colombia	Greece	India	Indonesia	Korea	Malaysia	Mexico	Pakistan	Philippines	Portugal	Taiwan	Thailand	Turkey	Venezuela	Zimbabwe	Average
<i>Monthly return (US\$)</i>																			
Mean	0.031	0.023	0.018	0.015	0.018	0.010	0.005	0.011	0.009	0.021	0.014	0.008	0.014	0.016	0.014	0.030	0.016	0.026	0.017
Standard deviation	0.211	0.168	0.078	0.088	0.115	0.091	0.139	0.121	0.100	0.118	0.103	0.104	0.101	0.134	0.123	0.199	0.140	0.167	0.128
Autocorrelation	-0.066	-0.011	0.212	0.397	0.082	0.107	0.195	0.023	0.103	0.270	0.034	0.263	0.250	0.058	0.091	0.101	0.045	0.174	0.129
Observations	204	204	204	204	204	204	168	204	204	204	204	204	204	204	204	204	204	204	202
<i>Return (local currency)</i>																			
Mean	0.098	0.133	0.023	0.028	0.022	0.017	0.010	0.011	0.010	0.032	0.019	0.012	0.014	0.016	0.015	0.067	0.038	0.047	0.034
Standard Deviation	0.362	0.232	0.071	0.088	0.115	0.094	0.107	0.104	0.090	0.110	0.100	0.096	0.099	0.130	0.116	0.195	0.127	0.144	0.132
Autocorrelation	0.241	0.227	0.214	0.389	0.109	0.107	0.111	0.074	0.077	0.289	0.026	0.203	0.272	0.046	0.029	0.061	0.119	0.122	0.151
Observations	204	204	204	204	204	204	168	204	204	204	204	204	204	204	204	204	204	204	202
<i>Dividend yield</i>																			
Mean	0.0022	0.0032	0.0038	0.0037	0.0033	0.0015	0.0014	0.0013	0.0019	0.0016	0.0047	0.0010	0.0021	0.0007	0.0022	0.0029	0.0030	0.0039	0.0025
Standard deviation	0.0016	0.0026	0.0019	0.0017	0.0018	0.0006	0.0009	0.0006	0.0007	0.0006	0.0028	0.0005	0.0008	0.0003	0.0013	0.0019	0.0031	0.0023	0.0014
Autocorrelation	0.828	0.871	0.969	0.977	0.897	0.933	0.957	0.776	0.924	0.907	0.953	0.948	0.913	0.898	0.856	0.855	0.978	0.948	0.910
Observations	204	204	204	204	204	204	168	204	204	204	204	204	204	204	204	194	204	204	201
<i>Turnover (value traded/MCAP) (TO)</i>																			
Mean	0.035	0.050	0.010	0.007	0.033	0.094	0.049	0.141	0.028	0.038	0.278	0.024	0.032	0.209	0.074	0.113	0.017	0.009	0.069
Standard deviation	0.021	0.025	0.006	0.004	0.034	0.099	0.027	0.108	0.018	0.017	0.448	0.014	0.024	0.090	0.057	0.114	0.017	0.008	0.063
Autocorrelation	0.739	0.816	0.423	0.474	0.788	0.844	0.710	0.877	0.725	0.649	0.920	0.668	0.798	0.641	0.685	0.842	0.674	0.553	0.712
Observations	204	204	204	204	204	204	169	204	204	204	204	204	204	204	204	204	204	204	202
<i>Proportion of daily (local currency) zero returns in that month (ZR - value-weighted)</i>																			
Mean	0.248	0.400	0.466	0.519	0.201	0.145	0.465	0.082	0.204	0.422	0.429	0.365	0.246	0.066	0.382	0.169	0.340	0.396	0.308
Standard deviation	0.215	0.159	0.120	0.128	0.141	0.042	0.159	0.033	0.118	0.247	0.200	0.116	0.128	0.043	0.109	0.099	0.200	0.171	0.135
Autocorrelation	0.967	0.801	0.941	0.892	0.956	0.799	0.956	0.773	0.943	0.986	0.953	0.906	0.937	0.899	0.901	0.906	0.909	0.772	0.900
Observations	192	168	174	144	192	168	165	204	204	192	149	196	192	196	204	192	167	132	180
<i>Price pressure of non-trading (PP - value weighted)</i>																			
Mean	0.584	0.709	0.730	0.764	0.361	0.375	0.776	0.239	0.338	0.665	0.704	0.658	0.644	0.158	0.626	0.371	0.568	0.663	0.552
Standard deviation	0.171	0.143	0.082	0.113	0.228	0.171	0.090	0.183	0.096	0.206	0.108	0.143	0.222	0.058	0.109	0.180	0.275	0.150	0.152
Autocorrelation	0.671	0.598	0.661	0.578	0.812	0.837	0.609	0.876	0.668	0.886	0.610	0.682	0.873	0.488	0.707	0.859	0.871	0.652	0.719
Observations	161	168	174	144	192	168	165	202	202	192	138	196	192	196	202	192	167	132	177
Ave. number of firms	43	307	162	35	239	713	183	666	470	92	167	135	159	257	379	180	26	30	236
Total number of firms	83	572	227	53	380	892	308	1612	815	163	240	217	271	562	401	295	53	89	402

The monthly returns (U.S.\$) and dividend yields are from the S&P/IFC. Equity market turnover for each month is the equity value traded for that month divided by that month's equity market capitalization from Standard and Poor's. Finally, the proportion of zero daily (local currency) returns and price pressure of non-trading observed over the month for each equity market use daily returns data at the firm level which are obtained from the Datastream research files starting from the late 1980's. For each country, we observe daily returns (using closing prices) for a large collection of firms listed on a domestic exchange. For each country, we calculate the value-weighted proportion of zero daily returns and price pressure across all firms for the month. We also list the number of firms used in the computations.

Table 2
Correlations of percentage of zero daily returns (value-weighted) with alternative measures of liquidity

	Price Pressure (<i>PP</i>)	Equal- Weighted Zero Returns (<i>ZR</i>)	Turnover (<i>TO</i>)	TARCH conditional volatility	Within month volatility	Bid-ask spread	Bid-ask spread and turnover (<i>TO</i>)
Argentina	0.31	0.79	-0.01	0.45	0.16		
Brazil	0.36	0.32	-0.06	0.13	0.15	0.09	0.06
Chile	0.65	0.83	-0.15	-0.12	-0.02		
Colombia	0.58	0.52	-0.34	0.29	-0.01		
Greece	0.67	0.63	-0.43	-0.69	-0.17		
India	0.37	0.73	-0.28	-0.02	-0.01		
Indonesia	-0.23	0.06	0.41	0.30	0.02	0.24	-0.05
Korea	0.84	0.79	-0.57	0.08	-0.02	0.66	-0.25
Malaysia	0.72	0.94	-0.12	-0.12	-0.18	0.52	-0.54
Mexico	0.80	0.80	-0.30	-0.08	-0.16	0.87	-0.09
Pakistan	0.54	0.31	0.42	0.58	0.18		
Philippines	0.73	0.68	-0.21	-0.26	-0.31	0.15	-0.33
Portugal	0.54	0.56	-0.65	-0.25	-0.16	0.27	-0.19
Taiwan	0.38	0.52	-0.19	-0.08	-0.14		
Thailand	0.56	0.65	-0.37	0.34	-0.13	0.82	-0.59
Turkey	0.35	0.53	0.34	0.15	-0.08	0.66	0.19
Venezuela	0.95	0.95	-0.62	-0.03	-0.05		
Zimbabwe	0.66	0.46	0.22	0.24	0.07		
Cross-sectional correlation	0.94		-0.35				
Time-series correlation	0.54	0.62	-0.16	0.05	-0.05	0.48	-0.20

For each country, we calculate the value-weighted proportion of zero daily returns (*ZR*) and price pressure of non-trading (*PP*) across all firms, and average this proportion over the month. Bid-ask spreads at the firm level are obtained from the Datastream research files (where available) for the countries shown here. Equity market turnover (*TO*) is the value traded for that month divided by that month's equity market capitalization. Estimates of conditional volatility are obtained for each country by maximum likelihood estimation of an asymmetric threshold GARCH(1,1) (TARCH). Following French, Schwert, and Stambaugh (1987), within-month volatility is constructed by first summing the squared returns for each firm within the month, and then averaging across value-weighted firms for that month. The time series correlation simply averages the time-series correlations across countries, whereas the cross-sectional correlation is the cross-sectional correlation between the time-series averages for the two measures.

Table 3
Specification tests of the bivariate VAR system

	Returns		Liquidity	
	First-order autocorrelation	Wald test: first three autocorrelations = 0 asymptotic p-value	First-order autocorrelation	Wald test: first three autocorrelations = 0 asymptotic p-value
Argentina	-0.012	0.937	-0.270	0.014*
Brazil	-0.034	0.471	0.036	<0.001*
Chile	0.047	0.770	-0.217	0.042*
Colombia	0.260	0.027*	-0.210	0.060
Greece	-0.088	0.617	0.199	0.022*
India	0.045	0.034*	0.371	<0.001*
Indonesia	0.177	0.073	-0.063	0.355
Korea	0.038	0.912	0.114	0.002*
Malaysia	0.078	0.015*	0.061	0.089
Mexico	0.092	0.754	0.118	0.263
Pakistan	-0.077	0.781	0.104	0.537
Philippines	0.143	0.377	-0.052	0.407
Portugal	0.027	0.729	0.261	<0.001*
Taiwan	-0.058	0.385	-0.109	0.120
Thailand	0.034	0.137	0.083	<0.001*
Turkey	-0.066	0.472	-0.065	0.309
Venezuela	-0.166	0.254	-0.093	0.576
Zimbabwe	-0.047	0.857	-0.339	0.002*
Joint test (all countries)		0.950		<0.001*
United States	0.003	0.841	-0.262	0.028*

This table presents several specification tests based upon on the residuals from the benchmark bivariate VAR for returns and liquidity. We report the first-order autocorrelation coefficient for each country's return and liquidity residuals. We also present asymptotic p-values, country-by-country, for a Wald test that the first three autocorrelations are jointly zero. Finally, we also conduct a joint Wald test where the null hypothesis is that all of the first three autocorrelations across countries are jointly zero (with $18 \times 3 = 54$ restrictions); asymptotic p-values are reported. * indicates the test statistic exceeds the Monte Carlo critical value for significance at the 5% level. We also report similar evidence for the U.S.

Table 4
Vector autoregression of returns and liquidity (value-weighted)
1993-2003

A. VAR dynamics:

A_0		Estimate	Standard error	A_1		Estimate	Standard error
R_t	Closed	0.0548	0.0422	R_t	Open	-0.0184	0.0550
	$L_{t-1}(ZR)$	-0.1321	0.0302		$L_{t-1}(ZR)$	0.1255	0.0353
$L_t(ZR)$	R_{t-1}	0.0296	0.0392	$L_t(ZR)$	R_{t-1}	0.0281	0.0504
	$L_{t-1}(ZR)$	0.6415	0.0275		$L_{t-1}(ZR)$	0.2389	0.0319
B_0				B_1			
R_t	$R_{w,t-1}$	0.2174	0.1411	R_t	$R_{w,t-1}$	-0.0141	0.1712
	$L_{w,t-1}(ZR)$	-0.4416	0.1736		$L_{w,t-1}(ZR)$	0.4041	0.2265
$L_t(ZR)$	$R_{w,t-1}$	0.2426	0.1685	$L_t(ZR)$	$R_{w,t-1}$	-0.1593	0.2057
	$L_{w,t-1}(ZR)$	-0.8979	0.1564		$L_{w,t-1}(ZR)$	0.5369	0.1964
α_1							
R_t	Lib _{t-1}	0.0805	0.0321				
$L_t(ZR)$	Lib _{t-1}	0.1835	0.0289				

B. U.S. VAR dynamics:

A_w		Estimate	Standard error	Σ_w		Estimate	Standard error
$R_{w,t}$	$R_{w,t-1}$	0.0085	0.0805	c_{11} (Returns)		0.0396	0.0025
	$L_{w,t-1}(ZR)$	-0.0974	0.0710	c_{21} (Returns and L)		-0.0013	0.0008
$L_{w,t}(ZR)$	$R_{w,t-1}$	0.0226	0.0191	c_{22} (L)		0.0084	0.0005
	$L_{w,t-1}(ZR)$	0.9876	0.0155				

C. Cholesky decomposition of variance-covariance matrix:

Σ_0		Estimate	Standard error	Σ_1		Estimate	Standard error
c_{11} (Returns)		0.1554	0.0042	c_{11} (Returns)		-0.0511	0.0051
c_{21} (Returns and L)		0.0331	0.0059	c_{21} (Returns and L)		-0.0251	0.0071
c_{22} (L)		0.1404	0.0044	c_{22} (L)		-0.0498	0.0054

D. Exposures to world shocks:

β_0		Estimate	Standard error	β_1		Estimate	Standard error
R_t	$R_{w,t}$	0.3430	0.1830	R_t	$R_{w,t}$	0.9112	0.2226
$L_t(ZR)$	$R_{w,t}$	0.0786	0.0618	$L_t(ZR)$	$R_{w,t}$	-0.0656	0.0792
R_t	$L_{w,t}(ZR)$	-0.6947	0.7163	R_t	$L_{w,t}(ZR)$	-0.3026	1.1200
$L_t(ZR)$	$L_{w,t}(ZR)$	-0.4990	0.6971	$L_t(ZR)$	$L_{w,t}(ZR)$	0.9084	0.8942
Return predictability local instruments				Return predictability world instruments			
		Wald Test	p-value			Wald Test	p-value
	Closed	20.58	0.0000		Closed	9.64	0.0081
	Open	1.98	0.3724		Open	2.86	0.2388
Change in predictability		62.23	0.0000	Change in predictability		10.38	0.0344

This table presents bivariate VAR maximum likelihood estimates, including excess returns and L . We include the lagged U.S. return, lagged U.S. liquidity, and lagged Liberalization Intensity indicator as additional exogenous variables, as well as fixed effects (not reported). We parameterize the Cholesky decomposition of the VAR innovation covariance as $\Sigma_0 + \text{Lib}_t \Sigma_1$, where c_{ij} denotes the ij th element of these two lower triangular matrices. We present Bollerslev and Wooldridge (1992) robust standard errors. In November 2001, S&P/IFC removed Colombia, Pakistan, Venezuela, and Zimbabwe from the Investability classification, forcing our investability measure to zero; we retain these values for our measure, but our evidence is similar over the earlier period.

Finally, we present several Wald tests on return predictability. For the first tests on return predictability from local instruments, the null hypothesis is that the first row of $A_0=0$ under segmentation and the first row of $A_0+A_1=0$ under integration. For the tests on return predictability from global instruments, the null hypothesis is that the first row of $B_0=0$ under segmentation and the first row of $B_0+B_1=0$ under integration. For the tests on the overall changes in predictability in each case, the null hypotheses are that $A_1=0$ or $B_1=0$. The test statistics have chi-square distributions under the null with 2 degrees of freedom.

Table 5
VARs for returns and alternative liquidity measures
1993-2003

Liquidity Measure	Amihud Hypotheses																					
	A_0		A_1		Σ_0		Σ_1		A_0		A_1		B_0		B_1		α_1		β_0		β_1	
	$[R_{i,t}, L_{i,t-1}]$	$[R_{i,t}, L_{i,t-1}]$	c_{21}	c_{21}	$[L_{i,t}, R_{i,t-1}]$	$[L_{i,t}, R_{i,t-1}]$	$[R_{i,t}, L_{w,t-1}]$	$[R_{i,t}, L_{w,t-1}]$	$[L_{i,t}, Lib_{t-1}]$	$[R_{i,t}, R_{w,t-1}]$	$[R_{i,t}, R_{w,t-1}]$											
L_t (ZR) value-weighted	-0.1321 (0.0302)	0.1255 (0.0354)	0.0331 (0.0059)	-0.0251 (0.0072)	0.0296 (0.0393)	0.0281 (0.0506)	-0.4416 (0.1736)	0.4042 (0.2272)	0.1835 (0.0289)	0.3430 (0.1829)	0.9112 (0.2224)											
L_t (ZR) equal-weighted	-0.0531 (0.0200)	0.0316 (0.0254)	0.0277 (0.0043)	-0.0041 (0.0056)	0.1144 (0.0287)	-0.0463 (0.0402)	-0.0535 (0.0834)	0.0441 (0.1135)	-0.0270 (0.0271)	0.3101 (0.1822)	0.9111 (0.2180)											
L_t (PP) value-weighted	-0.0323 (0.0130)	0.0263 (0.0158)	0.0415 (0.0138)	-0.0286 (0.0186)	0.0209 (0.0915)	0.1962 (0.1350)	-0.0520 (0.0651)	0.0433 (0.0874)	0.1664 (0.0647)	0.3745 (0.1809)	0.8869 (0.2169)											
L_t (PP) equal-weighted	-0.0177 (0.0150)	0.0070 (0.0186)	0.0013 (0.0086)	0.0271 (0.0117)	0.0390 (0.0560)	0.1395 (0.0841)	-0.0095 (0.0377)	0.0150 (0.0499)	-0.0853 (0.0511)	0.3792 (0.1864)	0.8521 (0.2257)											
L_t (TO) turnover	-0.0017 (0.0059)	0.0021 (0.0074)	0.0712 (0.0226)	0.0019 (0.0282)	0.2968 (0.1315)	-0.2449 (0.1731)	0.0107 (0.0235)	-0.0177 (0.0310)	-0.1426 (0.0866)	0.2962 (0.1854)	0.9512 (0.2237)											

This table presents selected coefficients from bivariate VAR maximum likelihood estimates, including excess returns and L . In contrast to the benchmark case presented in Table 4, we consider four alternative liquidity measures: equal-weighted zero return, value-weighted price pressure, and equal-weighted price pressure, and equity market turnover. We include the lagged U.S. return, lagged U.S. liquidity, and lagged Liberalization Intensity indicator as additional exogenous variables, as well as fixed effects (not reported). We parameterize the Cholesky decomposition of the VAR innovation covariance as $\Sigma_0 + Lib_{it}\Sigma_1$, where c_{21} denotes the element associated with the contemporaneous return-liquidity relation. We present Bollerslev and Wooldridge (1992) robust standard errors in parenthesis.

Table 6
Alternative VAR specifications for returns, liquidity, and dividend yields
1993-2003

Dependent variable: R_t			Dependent variable: R_t						
	Benchmark	Trivariate		Benchmark	Trivariate				
A₀			A₁						
L_{t-1} (ZR)	-0.1321 (0.0302)	-0.1118 (0.0361)	L_{t-1} (ZR)	0.1255 (0.0353)	0.1140 (0.0450)				
DY _{t-1}		0.0397 (0.0679)	DY _{t-1}		-0.0005 (0.0995)				
B₀			B₁						
$R_{w,t-1}$	0.2174 (0.1411)	0.2521 (0.2029)	$R_{w,t-1}$	-0.0141 (0.1712)	-0.0673 (0.2491)				
$L_{w,t-1}$ (ZR)	-0.4416 (0.1736)	-0.2359 (0.5476)	$L_{w,t-1}$ (ZR)	0.4041 (0.2265)	0.7276 (0.6943)				
DY _{w,t-1}		0.2521 (0.5965)	DY _{w,t-1}		0.5270 (0.7755)				
Dependent variable: DY_t			Dependent variable: DY_t						
A₀			A₁						
R_{t-1}		-0.0160 (0.0179)	R_{t-1}		0.0224 (0.0256)				
L_{t-1} (ZR)		-0.0173 (0.0134)	L_{t-1} (ZR)		0.0126 (0.0166)				
DY _{t-1}		0.9152 (0.0185)	DY _{t-1}		-0.0025 (0.0254)				
Cholesky decomposition of variance-covariance matrix:									
Σ_0			Σ_1						
(Returns and L)	0.0331 (0.0059)	0.0328 (0.0059)	(Returns and L)	-0.0251 (0.0071)	-0.0222 (0.0070)				
(Returns and DY)		-0.0164 (0.0024)	(Returns and DY)		-0.0061 (0.0030)				
(L and DY)		-0.0127 (0.0026)	(L and DY)		0.0134 (0.0033)				
Local return exposures to world shocks:									
β_0			β_1						
$R_{w,t}$	0.3430 (0.1830)	-0.2480 (0.1663)	$R_{w,t}$	0.9112 (0.2226)	0.7336 (0.2084)				
$L_{w,t}$	0.0786 (0.0618)	-0.2078 (2.5190)	$L_{w,t}$	-0.0656 (0.0792)	0.1739 (3.2560)				
DY _{w,t}		-0.1106 (1.7400)	DY _{w,t}		0.0550 (0.3398)				
Return predictability local instruments		Wald Tests		Return predictability world instruments		Wald Tests			
Closed	20.58	0.00	19.45	0.00	Closed	9.64	0.01	10.55	0.04
Open	1.98	0.37	1.12	0.76	Open	2.86	0.24	5.17	0.00
Change in predictability	62.23	0.00	94.17	0.00	Change in predictability	10.38	0.03	38.63	0.46

This table presents maximum likelihood estimates for two alternative VAR specifications: our benchmark bivariate VAR including excess returns and L and a trivariate VAR including excess returns, L , and dividend yields (multiplied by 100). As in Table 4, the Liberalization Intensity indicator is included in all cases as an additional exogenous variable. Due to computation limitations, the trivariate VARs do not incorporate the full cross-country covariances implied by the factor structure; within-country covariances are included. To conserve space, we only present select estimates of interest. We present return predictability coefficients, as well as the predictability coefficients for dividend yields. We parameterize the Cholesky decomposition of the VAR innovation covariance as $\Sigma_0 + \text{Lib}_t \Sigma_1$, where c_{ij} denotes the ij th element of these two lower triangular matrices.

We highlight the contemporaneous relation between returns, L , and dividend yields (plus dividend yields with L), which are assumed to differ across liberalization state. We also present Bollerslev and Wooldridge robust standard errors below each estimate in parentheses. Finally, we present several Wald tests on predictability. For the first tests on return predictability from local factors, the null hypothesis is that the first row of $A_0=0$ under segmentation and $A_0+A_1=0$ under integration.

For the tests on return predictability from global factors, the null hypothesis is that the first row of $B_0=0$ under segmentation and the first row of $B_0+B_1=0$ under integration. For the tests on the overall changes in predictability in each case, the null hypotheses are that $A_1=0$ or $B_1=0$. The test statistics have chi-squared distributions under the null with 2 (bivariate) or 3 (trivariate) degrees of freedom.

Table 7
VARs: alternative interaction effects
1993-2003

Interaction	Amihud Hypotheses					
	A_0	A_1	Σ_0	Σ_1	B_0	B_1 [in region]
	$[R_{i,t}, L_{i,t-1}]$	$[R_{i,t}, L_{i,t-1}]$	c_{21}	c_{21}	$[R_{i,t}, L_{c,t-1}]$	$[R_{i,t}, L_{c,t-1}]$
East Asia	-0.0238 (0.0123)	-0.0084 (0.0265)	0.0237 (0.0033)	-0.0140 (0.0040)	-0.1810 (0.1322)	0.1005 (0.1806)
Latin America	-0.0604 (0.0196)	0.0508 (0.0237)	0.0192 (0.0026)	-0.0006 (0.0053)	-0.0029 (0.0247)	0.0163 (0.0286)
Low/High liquidity level	-0.0534 (0.0153)	0.0324 (0.0272)	0.0244 (0.0070)	-0.0091 (0.0090)	-0.2232 (0.1086)	0.1742 (0.1200)
Law and order	-0.0804 (0.0327)	0.0696 (0.0500)	0.0413 (0.0093)	-0.0407 (0.0127)	-0.5937 (0.2629)	0.5402 (0.3429)
Political risk	-0.1460 (0.0599)	0.1832 (0.0854)	0.0576 (0.0107)	-0.0640 (0.0132)	-1.3100 (0.4454)	1.6980 (0.6149)

This table presents selected coefficients from bivariate VAR maximum likelihood estimates, including excess returns and L . In contrast to the benchmark case, presented in Table 4, where the VAR coefficients are interacted with financial openness, we interact the coefficients with five different interaction variables: two regional indicators for either East Asia or Latin America, an indicator separating countries into below or above median liquidity levels, and the ICRG's law and order and composite political risk indices (scaled to range from 0 to 1 where larger values denote better law and order or less political risk). For the regional regressions, the U.S. variables are replaced by East-Asian or Latin American variables, respectively.

We include the lagged U.S. return, lagged U.S. liquidity, and the lagged interaction indicator as additional exogenous variables, as well as fixed effects (not reported). For the regional and low/high liquidity level indices we include only the first two. We parameterize the Cholesky decomposition of the VAR innovation covariance as $\Sigma_0 + z_{it}\Sigma_1$, where c_{21} denotes the element associated with the contemporaneous return-liquidity relation and z_{it} represents one of the interaction variables. We present Bollerslev and Wooldridge (1992) robust standard errors in parentheses

Table 8
Liquidity pricing
1993-2003

A. Benchmark Model	Full integration	Full segmentation	Mixed	Mixed (no transaction cost adjustment)	Mixed (no systematic liquidity)	Mixed (world transaction cost adjustment)	Mixed (equal-weighted liquidity)
v_s		-0.0008 (0.0030)	-0.0095 (0.0068)		-0.0098 (0.0055)	-0.0043 (0.0072)	0.0215 (0.0079)
v_I	-0.0008 (0.0024)		0.0051 (0.0031)		-0.0014 (0.0028)	-0.0013 (0.0031)	-0.0003 (0.0022)
γ_s		0.313 (0.177)	-0.203 (0.311)	-0.011 (0.266)	0.301 (0.223)	-0.431 (0.450)	-0.385 (0.570)
$\gamma_{L,s}$		1.122 (0.513)	2.575 (0.908)	2.403 (0.871)		3.223 (1.159)	9.579 (2.268)
v_w						-0.058 (0.029)	
γ_w	2.848 (1.100)		2.848 (1.100)	2.848 (1.100)	2.697 (1.124)	-0.805 (1.948)	2.292 (1.106)
$\gamma_{L,w}$	57.240 (41.080)		57.240 (41.080)	57.240 (41.080)			35.910 (18.450)
<i>J</i> -Test p-value	282.7 <0.001	188.9 <0.001	183.5 <0.001	194.8 <0.001	214.4 <0.001	191.7 <0.001	179.8 <0.001
Correlation: ave. and pred. return	0.00	0.63	0.18	0.42	0.51	0.13	0.26
Distance metric	0.897	0.801	0.859	0.851	0.805	0.849	0.984

Table 8
Liquidity pricing
1993-2003

B. Alternative Model	High Liquidity Indicator				Political Risk Index				Law and Order Index			
	Full integration	Full segmentation	Mixed (delineate by financial openness)	Mixed (delineate by interaction variable)	Full integration	Full segmentation	Mixed (delineate by financial openness)	Mixed (delineate by interaction variable)	Full integration	Full segmentation	Mixed (delineate by financial openness)	Mixed (delineate by interaction variable)
v_s		-0.0057 (0.0032)	-0.0078 (0.0079)	0.0119 (0.0065)		0.0074 (0.0204)	-0.2091 (0.0609)	-0.0045 (0.0182)		0.0112 (0.0076)	-0.0105 (0.0145)	0.0224 (0.0062)
v_s *Interaction		-0.0008 (0.0156)	-0.0464 (0.0351)			-0.0084 (0.0297)	0.3847 (0.1124)			-0.0175 (0.0106)	0.0658 (0.0507)	
v_I	-0.0032 (0.0025)		0.0008 (0.0032)	-0.0116 (0.0093)	-0.0225 (0.0115)		0.0675 (0.0203)	0.0112 (0.0256)	0.0051 (0.0036)		0.0122 (0.0052)	-0.0347 (0.0086)
v_I *Interaction	-0.0426 (0.0101)		-0.0118 (0.0166)		0.0333 (0.0163)		-0.0970 (0.0284)		-0.0088 (0.0050)		-0.0210 (0.0086)	
γ_s		0.161 (0.205)	-0.391 (0.661)	0.326 (0.365)		0.228 (0.705)	-0.671 (1.481)	1.072 (0.548)		-0.213 (0.404)	0.038 (1.024)	0.709 (0.448)
γ_s *Interaction		0.656 (0.291)	2.008 (0.832)			-0.223 (1.288)	2.337 (2.767)			0.847 (0.672)	1.433 (1.925)	
$\gamma_{L,s}$		1.687 (0.470)	3.815 (1.428)	2.780 (1.339)		5.671 (3.452)	9.306 (7.134)	3.688 (1.422)		4.925 (2.131)	5.708 (3.663)	3.546 (1.432)
$\gamma_{L,s}$ *Interaction		-5.523 (1.525)	-14.440 (4.664)			-6.110 (5.734)	-11.250 (13.980)			-5.298 (3.525)	-4.204 (9.648)	
γ_w	2.848 (1.100)		2.848 (1.100)	2.848 (1.100)	2.848 (1.100)		2.848 (1.100)	2.848 (1.100)	2.848 (1.100)		2.848 (1.100)	2.848 (1.100)
$\gamma_{L,w}$	57.240 (41.080)		57.240 (41.080)	57.240 (41.080)	57.240 (41.080)		57.240 (41.080)	57.240 (41.080)	57.240 (41.080)		57.240 (41.080)	57.240 (41.080)
J-Test	257.1	176.8	154.0	141.7	283.4	172.8	143.0	125.8	275.7	164.3	159.5	94.8
p-value	<0.001	<0.001	<0.001	<0.001	<0.001	<0.001	<0.001	<0.001	<0.001	<0.001	<0.001	<0.001
Distance metric	0.962	0.842	0.896	0.892	0.896	0.854	0.981	0.766	0.919	0.836	0.933	0.682

This table presents evidence on liquidity pricing effects. Panel A contains evidence on our theoretical models: full integration, full segmentation, and mixed. The prices of world market and liquidity risk, γ_w and $\gamma_{L,w}$, are pre-estimated using GMM from the US CRSP data over 1962-2003; for the pre-estimation, we set $v_w = 0$. Taken the US estimates as given, we estimate each model using the investability measure to represent financial openness for the mixed model.

We also consider three alternative mixed models that allow both global and local risk sources. In the first and second, we consider alternatives where we shut down either the gross to net return transaction cost adjustments or the prices of risks associated with local and global systematic liquidity, respectively. Finally, we also estimate the general mixed model, but we replace the value-weighted zero return liquidity measure with the equal-weighted counterpart. Panel B contains evidence on several alternative models for which the relevant local prices of risk differ across countries by interacting with three variables: a high liquidity level indicator, ICRG's political risk index, and ICRG's law and order index. For the ICRG indices, higher index values denote lower risk or higher quality. As in panel A, we explore the following three models: full integration, full segmentation, and a mixed variant. We also consider a fourth model where the interacting variable determines the degree of market integration. In all cases, we report the standard test of over-identifying restrictions, and we also consider a comparison across models by evaluating distance metric similar to Hansen and Jagannathan (1991). Asymptotic standard errors are reported in parentheses.

Appendix Table
Monte Carlo analysis of return predictability

	DGP: no return predictability (null)	
	R_{t+1} on L_t	
	for closed countries	
	Coefficient	T-statistic
Median	0.0009	0.03
Mean	-0.0009	-0.05
2.5%	-0.0576	-2.03
5.0%	-0.0493	-1.73
95.0%	0.0495	1.73
97.5%	0.0604	2.09

For our sample of 18 emerging markets, plus the U.S., we simulate from the estimated bivariate VAR, including returns and liquidity, except that under the null, returns are not predicted by lagged variables. However, the innovations of all variables are allowed to be correlated as in the observed data within but not across emerging markets. The observed fixed effects are randomized across the sample for each replication. We employ the observed liberalization indicators for each replication. For each replication, we then estimate the unconstrained bivariate VAR(1) for returns and liquidity using our pooled MLE methodology. This table presents the mean and three relevant percentiles of the empirical distribution for the coefficients and robust t -statistics of excess returns on lagged liquidity.

Figure 1a
Comparison of transaction costs/liquidity measures using U.S. data

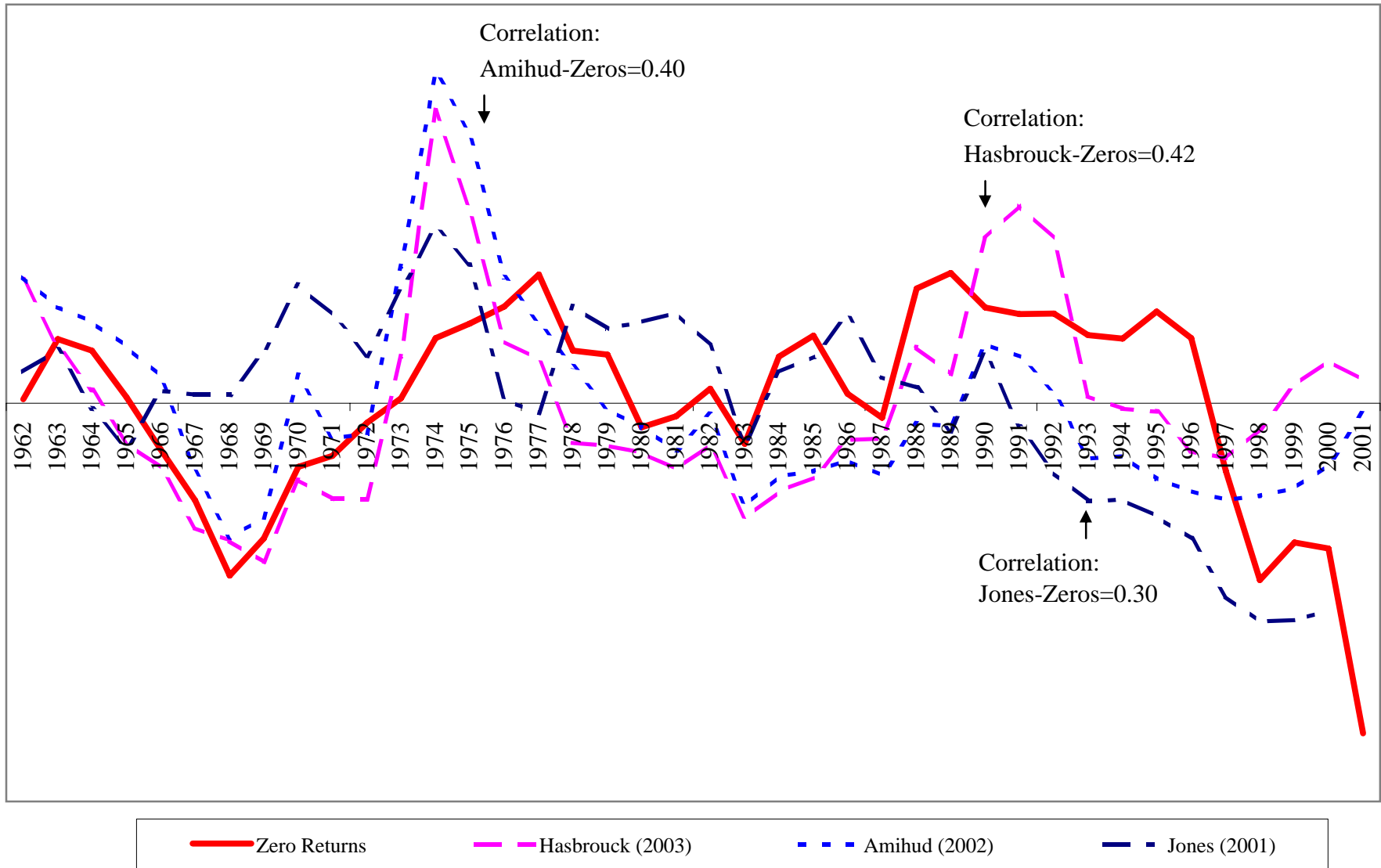


Figure 1b
Comparison of transaction costs/liquidity measures using U.S. data: zero volume

